



PRODUCT CATALOG



**Beverage sales solutions
preferred by bartenders, events
and brands.**



What's Inside

FOLDING BARS ON WHEELS	
WHY THE PORTABLE FOLDING BAR?	5
PROFESSIONAL BAR CURVED COUNTER	6
PROFESSIONAL PORTABLE BAR	7
STANDARD PORTABLE BAR	8
COMPACT PORTABLE BAR	9
FOLD & ROLL BACK BAR	10
RUSTIC PROFESSIONAL BAR	12
RUSTIC COMPACT BAR	13
DISTRESSED PORTABLE BAR	14
STAINLESS STEEL HEAVY-DUTY FOLD AND ROLL BAR	15
FOLDING BAR ON WHEELS DIAGRAM	16
GALLERY	18
FLASH BAR MODULAR SYSTEM	
WHAT IS THE FLASH BAR?	26
FLASH BAR SEGMENTS	28
FLASH BAR ACCESSORIES	35
BAR ESSENTIALS	36
SODA & BEER DISPENSING	44
LIGHTING & SAFETY	45
STORAGE & TRANSPORT	47
EXTRAS	49
EXTERIOR OPTIONS	50
NSF CERTIFIED FLASH BAR	51
WHO IS USING THE FLASH BAR AND HOW?	53
GALLERY	54
JOCKEY BOX COVER	59

This document was last updated August 2022.



FOLDING BARS ON WHEELS

WHY THE PORTABLE FOLDING BAR?

SEE A RETURN ON YOUR INVESTMENT...FAST

Reduce lines during peak hours, add a point of sale poolside or grab more eyeballs on your next product launch. Rent out advertising space to sponsors and clients, reduce set up times with staff and handle large events while freeing up storage space.

QUICK & EASY SET UP

Our bars set up and tear down easily within minutes, saving you and your staff time.

TRULY PORTABLE

Individually locking, industrial strength casters in steel casings make it easy for you to roll any of our bars from one place to the next.

INCREDIBLY FUNCTIONAL

Ice bins, cutting boards, speed wells, foldable shelving, interchangeable panels and other handy features - all carefully included to make your staff's job easier, so they can focus on the truly important stuff.

SPACE EFFICIENT

All of our portable bars fold quickly and easily, saving you valuable storage space. Each bar includes a polyester cover to protect your bar when not in use.

PROFESSIONAL APPEARANCE

The stylish, semi-permanent appearance of our bars will add a level of professionalism to your events. Each bar has been carefully designed to compliment your decor - instead of taking away from it.

HIGH QUALITY CONSTRUCTION

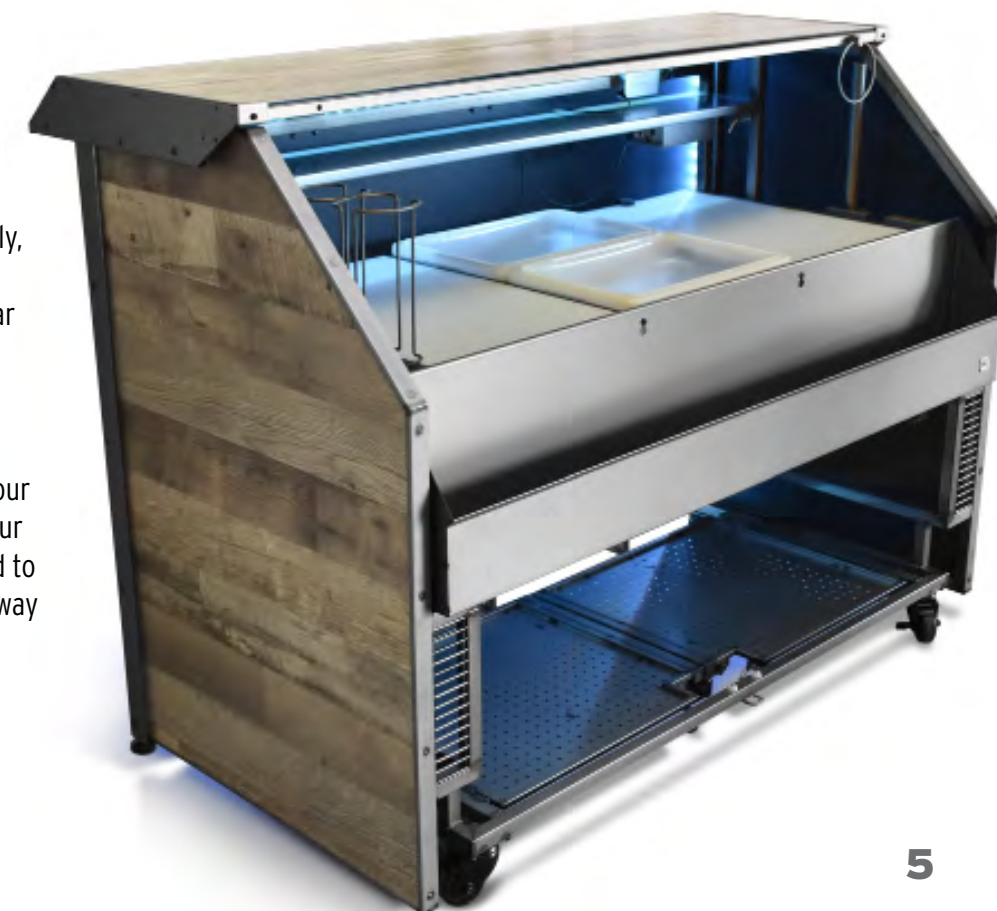
Each bar is constructed from high grade steel with a durable clear coat or powder coat finish - the same finish commonly used on cars in the auto industry. The interchangeable panels are made out of thick, high quality acrylic. The result is a rock-solid bar that will impress your clients and stand the test of time.

FULL COLOR GRAPHICS

Add eye-popping, full color graphics to any or all of the four panels allowing you to personalize a client's special day, add a company logo or promote a product launch.

LED LIGHTING

Include LED lighting to create a cool, nighttime vibe or to draw attention to your product. Plug directly into the wall or into the 8 hour rechargeable battery (included) and easily change the color and pattern with a touch of a button.



PROFESSIONAL BAR CURVED COUNTER

Folds to 16.5" in 5 minutes



EATURES

- Available in white or black powder coat frame
- Heavy-duty steel construction
- Interchangeable Panels - Translucent white acrylic, colored acrylic, custom graphics or laminates
- Elongated panels hide casters from view
- Glossy white or black powder coat finish
- Folds down to 16.5"
- 5 Minute set up time
- Curved bar counter top
- Foldable grid shelving underneath
- 2 Ice bins
- 2 Cutting boards
- Speed rail
- Cup rack
- Paper towel rack
- Knife holder
- Optional LEDs
- Cover Included

DIMENSIONS & WEIGHT

- Open: 84" Wide x 48.5" Tall x 48" Deep
- Folded: 84" Wide x 60" Tall x 16.5" Deep
- Weight: 290 lbs
- Caster: 3"

OPTIONAL UPGRADES

- LED Lighting is Available for all Panel Upgrades
 - 1. LEDs come with 8 color options & remote
 - 2. Optional rechargeable battery lasts 6 hours
- Vinyl Graphics
- Black Acrylic Panels
- Custom Laminate Panels



PROFESSIONAL PORTABLE BAR

Folds to 16.5" in 5 minutes



FEATURES

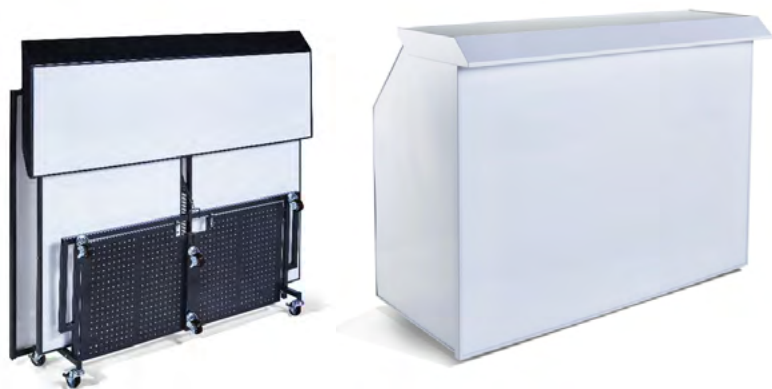
- Available in white or black powder coat frame
- Heavy-duty steel construction
- Interchangeable Panels - Translucent white acrylic, colored acrylic, custom graphics or laminates
- Elongated panels hide casters from view
- Glossy white or black powder coat finish
- Folds down to 16.5"
- 5 Minute set up time
- Upscale counter design
- Foldable grid shelving underneath
- 2 Ice bins
- 2 Cutting boards
- Speed rail
- Cup rack
- Paper towel rack
- Rag holder
- Knife holder
- Optional LEDs
- Cover (Folded) Included

DIMENSIONS & WEIGHT

- Open: 65" Wide x 48.5" Tall x 35.5" Deep
- Folded: 66" Wide x 60" Tall x 16.5" Deep
- Weight: 270 lbs
- Caster: 3"

OPTIONAL UPGRADES

- Gold Counter Finish
- LED Lighting is Available for all Panel Upgrades
 - 1. LEDs come with 8 color options & remote
 - 2. Optional rechargeable battery lasts 6 hours
- Vinyl Graphics
- Black Acrylic Panels
- Custom Laminate Panels
- Cover (Assembled)
- Sneeze Guard



STANDARD PORTABLE BAR

Folds to 13" in 2 minutes (No tools)



FEATURES

- Available in white or black powder coat frame
- Heavy-duty steel construction
- Interchangeable Panels - Translucent white acrylic, colored acrylic, custom graphics or laminates
- Glossy white or black powder coat finish
- Folds down to 13"
- 2 Minute set up time
- 2 Ice bins
- 2 Cutting boards
- Speed rail
- Optional LEDs
- Cover (Folded) Included

DIMENSIONS & WEIGHT

Open: 63.5" Wide x 49.5" Tall x 35" Deep
Folded: 68" Wide x 51.5" Tall x 13" Deep
Weight: 170 lbs
Caster: 3"

OPTIONAL UPGRADES

- LED External Lighting is Available for Translucent White Acrylic
 1. LEDs come with 8 color options & remote
 2. Optional rechargeable battery lasts 6 hours
- Vinyl Graphics
- Black Acrylic Panels
- Custom Laminate Panels
- Cover (Assembled)
- Sneeze Guard



COMPACT PORTABLE BAR

Folds to 7.5" in less than 2 minutes (No tools)



FEATURES

- Available in white or black powder coat frame
- Heavy-duty steel construction
- Interchangeable Panels - Translucent white acrylic, colored acrylic, custom graphics or laminates
- Elongated panels hide casters from view
- Glossy white or black powder coat finish
- Folds down to 7.5"
- Less than 2 Minute set up time
- Foldable grid shelving underneath
- 1 Ice bin
- 1 Cutting board
- Speed rail
- Optional LEDs
- Cover Included

DIMENSIONS & WEIGHT

Open: 39.5" Wide x 48" Tall x 24.5" Deep
Folded: 32.5" Wide x 51" Tall x 7.5" Deep
Weight: 70 lbs
Caster: 3"

OPTIONAL UPGRADES

- LED External Lighting is Available for Translucent White Acrylic
 1. LEDs come with 8 color options & remote
 2. Optional rechargeable battery lasts 6 hours
- Vinyl Graphics
- Black Acrylic Panels
- Custom Laminate Panels



FOLD & ROLL BACK BAR

Folds to 27.5" in 8 minutes



FEATURES

- Heavy-duty steel frame with protective powder coat available in: glossy white, glossy black
- Translucent white or solid black acrylic panels
- Two upper display shelves
- Lower storage cabinet
- Three removable cutting boards
- Two ice bins (interchangeable with the center cutting board) 30 lb ice capacity per bin
- Six heavy duty lockable 4" thermo rubber plated casters
- Two removable, swinging, lockable doors
- Covers (for folded and assembled positions)

DIMENSIONS & WEIGHT

Open: 68" Wide x 81" Tall x 31" Deep
Folded: 68" Wide x 52" Tall x 27.5" Deep
Weight: 350 lbs
Caster: 4"

OPTIONAL UPGRADES

- Remote controlled LED shelf lighting for upper display
- Remote controlled LED kit for backlighting the lower cabinet
- Rechargeable 8-hour battery for LEDs
- Panel Options
 - Colored acrylic back panel
 - Vinyl printing for the front, sides and/or back panels
 - Custom laminate panels front, sides and/or back panels

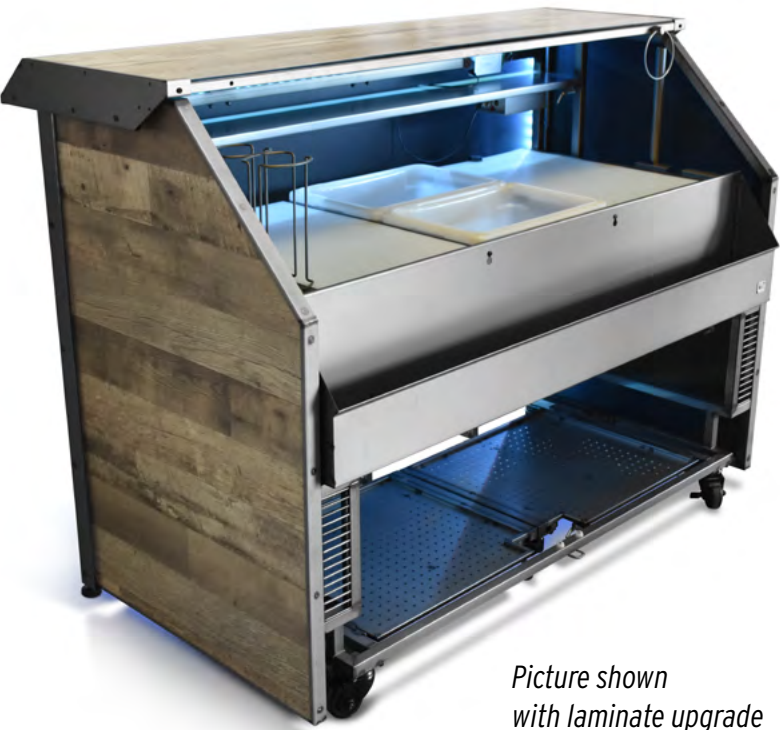
Colored Acrylic Option: Black.
We have other colored acrylic options available, pricing and lead time will vary. Please contact us for more information

The Fold & Roll Back Bar with LED lighted shelves highlighting the liquor that's displayed.



RUSTIC PROFESSIONAL BAR

Folds to 16.5" in 5 minutes
Each Bar Has Unique Distressed Marks
Recommended for indoor use



Picture shown
with laminate upgrade



FEATURES

- Rustic clear coat raw metal finish with unique distress marks
- Heavy-duty steel construction with clear coated rustic metal finish
- Interchangeable Panels - Translucent white acrylic, colored acrylic, custom graphics or laminates
- Elongated panels hide casters from view
- Folds down to 16.5"
- 5 Minute set up time
- Upscale counter design
- Foldable grid shelving underneath
- 2 Ice bins
- 2 Cutting boards
- Speed rail
- Cup rack
- Paper towel rack
- Rag holder
- Knife holder
- Optional LEDs
- Cover (Folded) Included

DIMENSIONS & WEIGHT

Open: 65" Wide x 48.5" Tall x 35.5" Deep
Folded: 66" Wide x 60" Tall x 16.5" Deep
Weight: 270 lbs
Caster: 3"

OPTIONAL UPGRADES

- LED Lighting is Available for all Panel Upgrades
 1. LEDs come with 8 color options & remote
 2. Optional rechargeable battery lasts 6 hours
- Vinyl Graphics
- Black Acrylic Panels
- Custom Laminate Panels
- Cover (Assembled)
- Sneeze Guard

* Available only with certain panel options

RUSTIC COMPACT BAR

Folds to 7.5" in less than 2 minutes (No tools)
Each Bar Has Unique Distressed Marks
Recommended for indoor use



Picture shown
with laminate upgrade



FEATURES

- Heavy-duty steel construction
- Interchangeable Panels - Translucent white acrylic, colored acrylic, custom graphics or laminates
- Elongated panels hide casters from view
- Glossy white or black powder coat finish
- Folds down to 7.5"
- Less than 2 Minute set up time
- Foldable grid shelving underneath
- 1 Ice bin
- 1 Cutting board
- Speed rail
- Optional LEDs
- Cover Included

DIMENSIONS & WEIGHT

Open: 39.5" Wide x 48" Tall x 24.5" Deep
Folded: 32.5" Wide x 51" Tall x 7.5" Deep
Weight: 70 lbs
Caster: 3"

OPTIONAL UPGRADES

- LED Lights*
- Vinyl Graphics
- Black Acrylic Panels
- Custom Laminate Panels

* Available only with certain panel options

DISTRESSED PORTABLE BAR

Folds to 31.5" in 5 minutes (No tools)
Each Bar Has Unique Distressed Marks
Recommended for indoor use



FEATURES

- Clear Coat Metal With Unique Distressed Marks
- Heavy-duty Construction
- Customizable Laminated Exterior Panels
- 1 Stainless Steel Ice Bin,
- 1 Speed Rail,
- Heavy-duty 5" plated casters
- 5 Minute set up time

DIMENSIONS & WEIGHT

Open: 67" Wide x 48" Tall x 42" Deep
Folded: 69" Wide x 47" Tall x 31.5" Deep
Weight: 430 lbs
Caster: 5"

OPTIONAL UPGRADES

- Ice Bin (with or without Drain Tank)
- Self- Contained Sink (Room Temp water)
- Self- Contained Sink (Hot & Room Temp water)
- LED Lighting
- LED Lighting (no battery)
- Work Surface Lighting
- Cover (Folded)
- Cover (Assembled)



STAINLESS STEEL HEAVY-DUTY FOLD AND ROLL BAR

Folds to 26" in less than 5 minutes (No tools)
Suitable for Outdoor Use



FEATURES

- 1 x White Acrylic Front Panel
- 2 x Stainless Steel Side Panels
- 1 x Speed Rail
- 2 x Covers (Folded & Assembled)
- 304 Stainless Steel Customer Counter
- 1 x Foot Rail
- 6 x 5" Plated Casters
- Stainless Steel Base
- Stainless Steel Work Surface

DIMENSIONS & WEIGHT

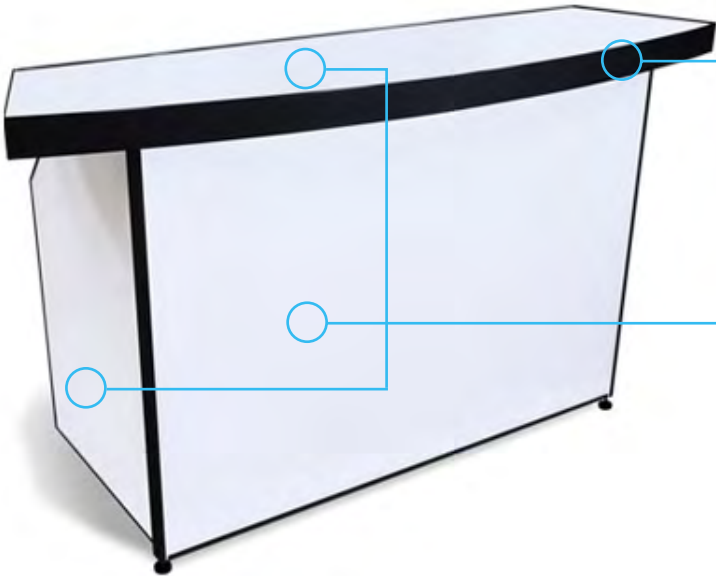
Open: 70" Wide x 45.5" Tall x 40" Deep
Folded: 70" Wide x 45" Tall x 26" Deep
Weight: 375 lbs
Caster: 6 x 5"

OPTIONAL UPGRADES

- Panel Options
 - 3 Stainless Steel Panels
 - 1 Customizable Front Panel, 2 Stainless Side Panels
 - 3 Customizable Panels (Front and Sides)
 - Customizable Panel Options
 - Textured Vinyl Print (Mimic Wood & Stone Looks on Acrylic Panels)
 - [Laminate on Marine Board Panels \(This panel option must be covered from the elements\)](#)
- Exterior LED & Branding Upgrades (Available with all panel types)
 - Vinyl Print (Branded Logo on any panels)
 - LEDs w/ Battery
 - LEDs w/ No Battery
- Interior Upgrades (Interchangeable in 3 Compartments)
 - Ice Bin w/ Tank (Max 3 per bar)
 - Sink SC Sink no Heater (Max 1 per bar)
 - Sink SC Sink w/ Heater (Max 1 per bar)
 - Umbrella Holder (Can go on the left or right side)
 - Attachment Kit to Connect Bars



FOLDING BAR ON WHEELS DIAGRAM



FRAME OPTIONS

All frame are made of durable protected steel.

- White Powder Coat Steel
- Black Powder Coat Steel
- Clear Coat Steel (Rustic Frame)

PANEL OPTIONS

All models come with white acrylic panels unless noted. The white acrylic appears solid unless back lit with a LED kit. Available panel upgrades include:

- Black Acrylic Panels
- Laminate Panels
- Vinyl Print (Custom Art Available for Install on all Panel Options)

FRAME OPTIONS AVAILABLE PER MODEL

	Professional Curved Counter	Professional	Standard	Compact	Distressed Bar	Stainless Steel Heavy-Duty Fold and Roll Bar	Fold & Roll Back Bar
WHITE POWDER COAT STEEL							
BLACK POWDER COAT STEEL							
CLEAR COAT STEEL (RUSTIC FRAME)							
STAINLESS STEEL							

FOLDING BARS ON WHEELS PANEL & LED GUIDE

	WHITE ACRYLIC PANELS Translucent when back lit	BLACK ACRYLIC PANELS Other colored acrylic options available	LAMINATE PANELS 700+ Laminate finish options	STAINLESS STEEL PANELS	VINYL PRINT PANELS Full Print on Acrylic Panels or Cutouts on Laminate
Professional Curved Counter	Default Panel A LED Upgrade	4 Black Acrylic Panels B LED Upgrade	3 - 4 Laminate Panels C LED Upgrade		1 - 4 Vinyl Print on Acrylic Panels LED Upgrade *
Professional	Default Panel A LED Upgrade	3 - 4 Black Acrylic Panels B LED Upgrade	3 - 4 Laminate Panels C LED Upgrade		1 - 4 Vinyl Print on Acrylic Panels LED Upgrade *
Standard	Default Panel A LED Upgrade	3 - 4 Black Acrylic Panels B LED Upgrade	3 - 4 Laminate Panels B LED Upgrade		1 - 4 Vinyl Print on Acrylic Panels LED Upgrade *
Compact	Default Panel A LED Upgrade	3 - 4 Black Acrylic Panels B LED Upgrade	3 - 4 Laminate Panels B LED Upgrade		1 - 4 Vinyl Print on Acrylic Panels LED Upgrade *
Distressed Bar			Default Panel B LED Upgrade C LED Upgrade		
Stainless Steel Heavy-Duty Fold and Roll Bar	1 - 3 White Acrylic Panels B LED Upgrade C LED Upgrade	1 - 3 Black Acrylic Panels B LED Upgrade C LED Upgrade	1 - 3 Laminate Panels B LED Upgrade C LED Upgrade	Default Panel B LED Upgrade C LED Upgrade	1 - 3 Vinyl Print on Acrylic Panels B LED Upgrade C LED Upgrade
Fold & Roll Back Bar	Default Panel B LED Upgrade C LED Upgrade	5 Black Acrylic Panels B LED Upgrade C LED Upgrade	1 - 5 Laminate Panels B LED Upgrade C LED Upgrade		1 - 5 Vinyl Print on Acrylic Panels B LED Upgrade C LED Upgrade

A Lights both interior & exterior B Lights the interior C Lights the exterior * LED availability depends on the base panel



GALLERY



GRAND HYATT KAUAI RESORT & SPA

Product: The Professional Bar and The Fold and Roll Back Bar with Black Frame

Panels: Textured Wood Vinyl Print

Use: Hotel Bar/ Event Use



PUNCH BOWL SOCIAL

Product: The Professional Bar Black Frame

Panels: Vinyl Printing



CRAFTED HOSPITALITY

Product: Curved Counter Professional Bar White Frame

Panels: Textured Wood Vinyl Print

Use: Event Bar



PERFECT MIX MOBILE BARTENDING

Product: Standard Bar Black Frame

Panels: Vinyl Printing

Use: Serving Station at Golf Course



NEIMAN MARCUS

Product: Professional Bar White Frame

Panels: Vinyl Printing

Use: Mall Fashion Show



PERRIER

Product: Professional Portable Bar White Frame

Panels: Vinyl Printing

Use: Portable Bar



MARGARITAVILLE

Product: Professional Bar White Frame

Panels: Vinyl Printing



Products: Professional Bar Curved Counter and Fold & Roll Back Bar
Panels: Antique Marula Pine Laminate



Products: Professional Bar Curved Counter and Fold & Roll Back Bar
Panels: White Acrylic



PBC
Product: Distressed Portable Bar
Panels: Rediscovered Oak Plank





SILVER MOON

Product: Professional Bar Black Frame
Panels: Vinyl Printing



SAZERAC HOUSE

Product: The Professional Bar with Black Frame
Panels: Scorched Chestnut Laminate with Cutout Vinyl Logo
Use: Distillery Tasting Room



Product: Stainless Steel Heavy Duty Fold & Roll Bar
Panels: Planked Chesnut Wood Textured Vinyl Print



BRIAR CLUB

Product: Professional and Compact Bars with Black Frame
Panels: Antiqued Tobacco Pine with Cutout Vinyl Logo
Use: Clubhouse Bar





FLASH BARTM
MODULAR SYSTEMS

WHAT IS THE FLASH BAR?

The Flash Bar Modular System is a product line of The Portable Bar Company. The Flash Bar goes places wheels can't, such as upstairs or over grass since it can be broken down and carried.

Its customizable design allows you to pick and change the size, shape, look, and accessories to create a unique serving experience.

Its easy set up allows you to change your bar on site per your event's needs. Yet it's durable enough to be used as a substitute for a permanent solution.

PICK YOUR SHAPE

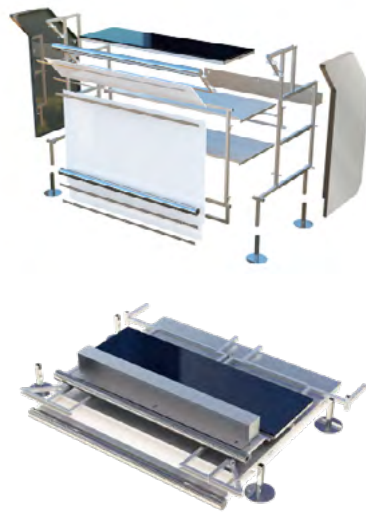
Build custom bar shapes



by mixing and matching 6 different shaped segments



transport the bar by breaking them down into smaller pieces in minutes



* Matching Back Bars are available too

CLICK HERE

To Create your own Flash Bar with our Bar Builder on our website

Takes less than 5 minutes to fill out. It calculates the price, the bar footprint, and generates a rendering in real-time.

CHOOSE THE INTERIOR

Create your own use with the available upgrades:

Sinks • Ice Storage • Speed Rails • Adjustable Shelving • Trash Chutes



* Upgrade the Flash Bar with a draft system by adding a Jockey Box

DESIGN THE LOOK

Options vary for indoor and outdoor use



Optional Panel Upgrades for Flash Bar & Flash Bar Back Bar:

- Comes with White ACP Panels (Aluminum Composite)
- LED Lighting (Works with all Panel Types)
- Vinyl Printing (Branding & Logos)
- WilsonArt Laminate (Wood & Stone Looks for Indoor Use) 800 + Finishes
- Textured Vinyl Printing (Wood & Stone Looks for Outdoor Use)



Counter Upgrades:

- Comes with Black Acrylic Counters (Recommended for Indoor Use Only)
- Seaboard Counters (White or Black)
- Stainless Steel Counters
- WilsonArt Laminate (Wood & Stone Looks for Recommended for Indoor Use Only) 800 + Finishes



FLASH BAR SEGMENTS



STRAIGHT SEGMENT

Adds Length & Holds Accessories

INCLUDES

- 2 Levelers
- 1 Side Frame
- 1 Support Bar at the bottom
- 1 Front Frame
- 1 Large Panel
- 1 Small Panel
- 2 Shelves (one is the working surface)
- 1 Acrylic Counter

DIMENSIONS

4'2" Wide x 2'8" Deep x 3'8" Tall
Weight: 100 lbs.



3 Straight Segments



CIRCULAR SEGMENT

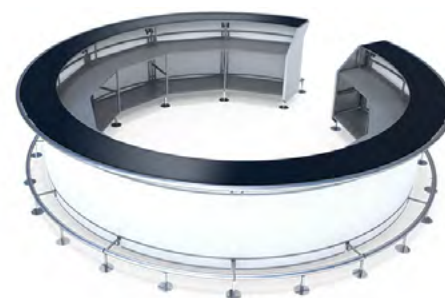
Makes Circle & Holds Accessories

INCLUDES

- 3 Levelers
- 1 Side Frame
- 1 Support Bar at the bottom
- 1 Front Frame
- 1 Large Panel
- 1 Small Panel
- 2 Shelves (one is the working surface)
- 1 Acrylic Counter

DIMENSIONS

4'5" Wide x 2'9" Deep x 3'8" Tall
Weight: 100 lbs.



(11) Circular Segments

FLASH BAR SEGMENTS



90° CORNER SEGMENT

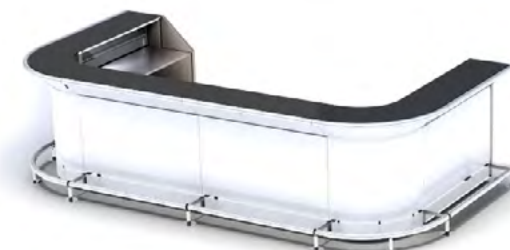
Makes Right Angles & Rounded Ends

INCLUDES

- 3 Levelers
- 1 Side Frame
- 1 Front Frame
- Support Bar at the bottom
- 1 Large Panel
- 1 Small Panel
- 2 Shelves (one is the working surface)
- 1 Acrylic Counter

DIMENSIONS

2'8" Wide and 2'8" Deep x 3'8" Tall
Weight: 80 lbs.



(4) Straight Segments, (2) 90° Segments



60° CORNER SEGMENT

Makes V-Shapes & Hexagons

INCLUDES

- 3 Levelers
- 1 Side Frame
- 1 Front Frame
- Support Bar at the bottom
- 1 Large Panel
- 1 Small Panel
- 2 Shelves (one is the working surface)
- 1 Acrylic Counter

DIMENSIONS

2'8" Wide and 3'1" Deep x 3'8" Tall
Weight: 80 lbs.



(5) Straight Segments, (4) 60° Segments

FLASH BAR SEGMENTS



REVERSE 90° CORNER SEGMENT

Follows Corners

INCLUDES

- 2 Levelers
- 1 Side Frame
- 1 Front Frame
- Support Bar at the bottom
- 1 Large Panel
- 1 Small Panel
- 2 Shelves (one is the working surface)
- 1 Acrylic Counter

DIMENSIONS

3'11" Wide and 2" Deep x 3'8" Tall
Weight: 80 lbs.



(4) Straight Segments, (1) 90° Segment,
(1) Reverse 90° Segment



ADA SEGMENT

ADA - Compliant

INCLUDES

- 2 Levelers
- 1 Side Frame
- 1 Front Frame
- Support Bar at the bottom
- 1 Large Panel
- 1 Small Panel
- 2 Shelves (one is the working surface)
- 1 Acrylic Counter

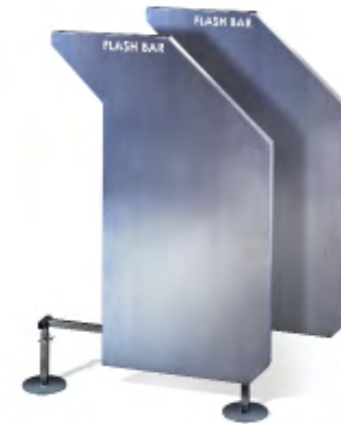
DIMENSIONS

5'8" Wide and 3' Deep x 3'8" Tall
Weight: 180 lbs.



(2) Straight Segments, (1) ADA Segment

FLASH BAR SEGMENTS



END CAP KIT

FINISHES BAR

Extra set lets you split multiple segment bars into smaller bars

INCLUDES

- 2 End Caps
- 1 Side Frame
- 2 Levelers

WEIGHT: 25 lbs.



(4) Straight Segments, (1) 90° Segment,
(1) Reverse 90° Segment



BACK BAR

INCLUDES

- 1 lower side frame with feet
- 1 upper side frame
- 2 stainless steel work shelves
- 2 stainless steel upper display shelves
- 1 white acrylic panel
- 1 stainless steel electrical box with GFCI electrical cord

DIMENSIONS

59.31" x Wide 74.89" Tall x 30" Deep
Weight: 190 lbs.



(2) Back Bars with optional Sign Holder

FLASH BAR SEGMENTS

BACK BAR

This new modular unit can be used on its own or as a support unit behind your Flash Bar. You are able to combine multiple units together to make one large structure.

BACKBAR INCLUDES

- 1 Lower Side Frame with Feet
- 1 Upper Side Frame
- 2 Stainless Steel Working Shelves
- 2 Stainless Steel Upper Display Shelves
- 1 White Acrylic Panel
- GFI Outlet

END CAP KIT INCLUDES

- 1 Lower Side Frame with Feet
- 1 Upper Side Frame
- 1 Set Stainless Steel End Caps (Left & Right)

OPTIONAL UPGRADES

- Colored / Laminate Panels
- Locking Doors
- Middle Lower Shelf
- Top Sign / Large Top Sign
- LED Kit





FLASH BAR ACCESSORIES

Most accessories kits are available on the right or left side for the Straight Segment. Some accessory kits are available for the Circular and 90° Corner Segments and those are usually placed in the center of the work surface. Every accessory kit comes with all the parts needed to retrofit it into an existing segment.

BAR ESSENTIALS

ICE BIN KITS



**LEFT SIDE
SELF-CONTAINED
25-LB CAPACITY ICE BIN**

- INCLUDES**
- 25LB Ice Bin
 - Drain Tank
 - Fits in Straight Segment
 - 1 Left Side Hole Accessory Shelf for Straight Segment

DIMENSIONS
19.5" x 17.5" x 10" Deep
15" x 13" x 9.75" Deep Inside)
CAPACITY: 25 lbs / 7.5 Gallons



**RIGHT SIDE
SELF-CONTAINED
25-LB CAPACITY ICE BIN**

- INCLUDES**
- 25LB Ice Bin
 - Drain Tank
 - Fits in Straight Segment
 - 1 Right Side Hole Accessory Shelf for Straight Segment

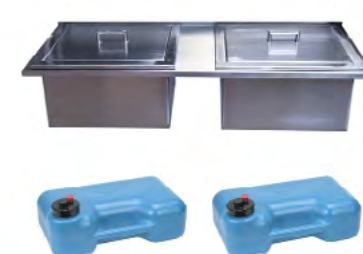
DIMENSIONS
19.5" x 17.5" x 10" Deep
15" x 13" x 9.75" Deep Inside)
CAPACITY: 25 lbs / 7.5 Gallons



**CENTER
SELF-CONTAINED
25-LB CAPACITY ICE BIN**

- INCLUDES**
- 25LB Ice Bin
 - Drain Tank
 - Fits in Circle Segment
 - 1 Center Hole Accessory Shelf for the Circular Segment

DIMENSIONS
19.5" x 17.5" x 10" Deep (Outside)
15" x 13" x 9.75" Deep Inside)
CAPACITY: 25 lbs / 7.5 Gallons



**TWO SELF-CONTAINED
25-LB CAPACITY ICE BINS**

- INCLUDES**
- (2) 25LB Ice Bin
 - Drain Tank
 - Fits in Straight Segment
 - 1 Double Hole Accessory Shelf for Straight Segment

DIMENSIONS
17 3/4" (L) x 19 11/16" (D) x 10 27/32" (T) (Outside)
16.5 "x (L) 18.5"(D) x 9 1/4" (T) (Inside)



ICE BIN KITS



**SELF-CONTAINED
20-LB CAPACITY ICE BIN**

- INCLUDES**
- 20LB Ice Bin
 - Drain Tank
 - Fits in Straight Segment
 - 1 Center Hole Accessory Shelf for 90 Corner Segment

DIMENSIONS
19.5" x 14" x 15.5" Deep (Outside)
CAPACITY: 20 lbs of crushed ice



UNDER BAR ICE BIN

- INCLUDES**
- Large 120-LB Capacity Ice Bin
 - Drain Tank
 - Detachable rolling base
 - Fits between 1 straight segment or stands on it's own.

DIMENSIONS
11"H x 14.25" D x 38" W (Inside)
CAPACITY: 125 lbs / 28 Gallons

All ice storage can be purchased without a tank by request.
All ice bins can be upgraded to a larger 35 lb capacity bin.
All ice bin's that are built into the bar can be purchased with an additional middle accessory shelf.

All ice storage can be purchased without a tank by request.
All ice bins can be upgraded to a larger 35 lb capacity bin.
All ice bin's that are built into the bar can be purchased with an additional middle accessory shelf.

BAR ESSENTIALS

SINK KITS



SINK - NO PLUMBING

INCLUDES

- Single Bowl Dual Mount Series
- Polished chrome Pfister bar faucet
- MOEN 3.5in Composite Drain / Stainless Steel
- Dual Function Shelf with Cutout (fits sink or ice bin)
- Fits Straight* & Circular** segments
- Works with Rolling Base (p 47)



GREY WATER SINK

INCLUDES

- Stainless Steel Sink Kit
- (1) 5 Gallon High-density Polyethylene Tanks (waste tank)
- Fits Straight* & Circular** segments



SELF CONTAINED SINK - ROOM TEMP WATER

INCLUDES

- Stainless Steel Sink Kit
- (2) 5 Gallon High-density Polyethylene Tanks (waste & clean water tanks)
- 1.9GPM Water Pump with Power Adaptor
- System Fittings and Hoses (Vinyl Hoses, GFC Cord)
- Battery (Optional)
- Fits Straight* & Circular** segments



SELF CONTAINED SINK - HOT & ROOM TEMP WATER

INCLUDES

- Stainless Steel Sink Kit
- (2) 5 Gallon High-density Polyethylene Tanks (waste & clean water tanks)
- 1.9GPM Water Pump with Power Adaptor
- System Fittings and Hoses (Vinyl Hoses, GFC Cord, additional hoses/pipe fittings)
- 2.5 Gallon Electric Water Heater
- Power adaptor
- Fits Straight* & Circular** segments



* Available on right or left side ** Available in the center of the segment

BAR ESSENTIALS

SINK KITS



4 BASIN SINK KIT WITH FAUCETS AND DRAINS

This sink kit allows you to connect your own plumbing system.

INCLUDES

- 16 Gauge 304 Stainless Steel 4-Basin Sink
- 1 Handwashing Basin
- 3 Dish / Solvent Basins
- 6in Backsplash
- 6in Partition Between Handwash and Solvent Basins
- Drain Plugs Included
- Fits in Straight Segment only



FULL SELF CONTAINED 4 BASIN SINK SYSTEM

The included plumbing system creates a fully self contained solution for venues and events.

INCLUDES

- 4 Basin Sink Kit with Faucets & Drains
- Stepped Down Bottom Shelf
- (1) 5 Gallon High-density Polyethylene Tank
- (1) 6 Gallon High-density Polyethylene Tank
- 1.9GPM Water Pump
- Surge protector and Power adapter
- System Fittings and Hoses
- 2.5 Gallon Electric Water Heater (Adjustable water temperature from 50F to 140F)
- PVC Plumbing
- Fits in Straight Segment only
- Does not work with Rolling Base (p 47)

* Available on right or left side ** Available in the center of the segment

BAR ESSENTIALS

SINK KITS



SINK W/ DRAINBOARD

- INCLUDES**
- Stainless Steel Sink with Drain-board, Faucet and Strainer
 - Fits Straight segment only



SELF CONTAINED SINK W/ DRAINBOARD - ROOM TEMP WATER

- INCLUDES**
- Stainless Steel Sink with Drain-board, Faucet and Strainer
 - 2) 5 Gallon High-density Polyethylene Tanks
 - 1.9GPM Water Pump with Power Adaptor
 - System Fittings and Hoses
 - Fits Straight segment only



SELF CONTAINED SINK W/ DRAINBOARD - HOT & ROOM TEMP WATER

- INCLUDES**
- Stainless Steel Sink with Drain-board, Faucet and Strainer
 - 2) 5 Gallon High-density Polyethylene Tanks
 - 1.9GPM Water Pump with Power Adaptor
 - System Fittings and Hoses
 - Hot Water Components
 - 2.5 Gallon Electric Water Heater (Adjustable water temperature from 50F to 140F)
 - Power adaptor and additional hoses/pipe fittings
 - Fits Straight segment only



LARGE SINGLE SPEED RAIL

- The full length of a straight segment, approximately 4 Feet Long
- up to 10 one-liter bottles
- Fits Straight Segment only

DIMENSIONS
42" Wide x 4" Deep x 6" Tall



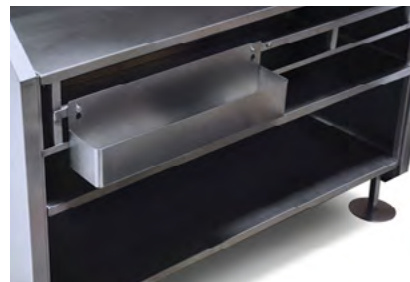
SPEED RAILS



HALF SINGLE SPEED RAIL

- Half the length of a Straight Segment Interchangeable on the left or right side of a straight segment on site
- 5-6 one-liter bottles
- Fits Straight & Circular Segments

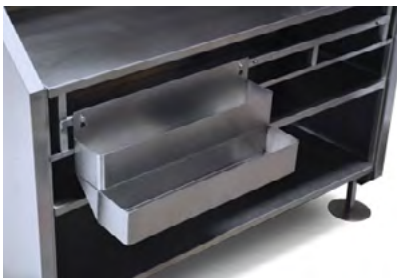
DIMENSIONS
21" Wide 6" Tall 4" Deep



HALF TIERED SPEED RAIL

- Two Half Length Shelves welded together or Tiered Storage, Interchangeable on the left or right side of a straight segment on site
- up to 10 one-liter bottles
- Fits Straight & Circular Segments

DIMENSIONS
21" Wide 8" Tall 8" Deep



BAR ESSENTIALS

SHOWMAN'S SHELVES



SHOWMAN'S SHELF - FULL LENGTH

- Attaches to the back side of the counter.
- Equipped with drainage holes
- Optional Drain Tank
- Fits Straight segment only

DIMENSIONS

50" x 7" x 6"



SHOWMAN'S SHELF - REGULAR

- Attaches to the back side of the counter on the left or right side.
- Equipped with drainage holes
- Fits Straight segment only

DIMENSIONS

18" Wide x 5.75" Deep



BAR ESSENTIALS

TRASH CHUTES



The Flash Bar Trash Chute is designed to work with the Flash Bar Straight Segment and the 90° Corner Segment. The trash chute, constructed of heavy-duty 304 stainless steel, tucks away into the workspace to provide 5.6 gallons of hidden trash storage.

The Flash Bar Trash Chute makes the best use of often unused worktop space of the 90° Corner Segment. It fits into a special drop-in shelf that can be retrofitted into a Straight Segment or V2 90° Corner Segment. The drop-in style allows the Trash Chute to be installed in under a minute and helps secure a 13 gallon (kitchen size) or larger trash bag.

Use the Trash Chute with the lid to hide messes and smells. Use without the lid for quick, easy access to trash disposal.



TRASH CHUTE FOR STRAIGHT SEGMENT

- 5.6 gallons of hidden trash storage capacity.
- Includes shelving with special cutout for the trash chute to fit Straight segments

DIMENSIONS

21" Wide 8" Tall 8" Deep



TRASH CHUTE FOR 90 CORNER SEGMENT

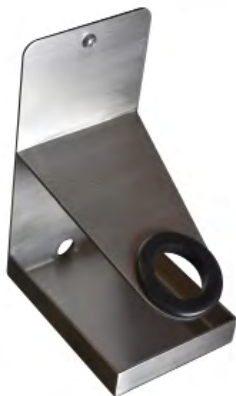
- 5.6 gallons of hidden trash storage capacity.
- Includes shelving with special cutout for the trash chute to fit 90 Corner segments

DIMENSIONS

21" Wide 8" Tall 8" Deep



SODA & BEER DISPENSING

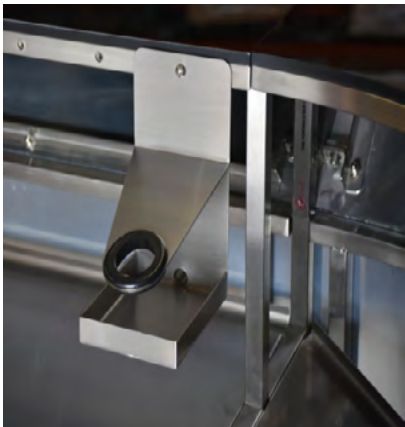


SODA GUN MOUNT

- The Flash Bar Soda Gun Mount is designed for Wunder-Bar® and Schroeder America™ style soda guns*
- *Soda gun sold separately
- Fits Straight segment only

DIMENSIONS

4" Wide 8" Tall 5" Deep



JOCKEY BOX

FEATURES

- Stainless steel construction
- 120' long coils
- (2) 304 stainless steel taps with all of the shanks, coils and faucets
- (2) 5ft Food-grade Thermoplastic vinyl hose beer lines with Stainless Steel Tailpiece and Hex Nut
- Can serve two different beers simultaneously
- Drain Hose
- Drip Tray

DIMENSIONS & WEIGHT

23.25" W x 10.75" H x 22.75" D (With Drip Tray Installed)
Weight: 65 lbs

ADDITIONAL ITEMS FOR FULL SYSTEM

- CO2 Tank • Regulator
- (2) Coupler • (2) Airline

CLEANING KIT ITEMS

- Cleaning Kit • 0.5oz No-Rinse Cleaner
- 32oz Beer Line Cleaner • Wrench

LIGHTING & SAFETY



WORK SURFACE LIGHTING

- Work area lighting ideal for dark environments
- Can light 1 - 2 Straight Segments
- Attaches to the bar counter, for discreet indirect light



LED EXTERIOR LIGHTING

- 8 Color options: Red, Orange, Yellow, Blue, Cyan, Purple, White, Green
- Waterproof LEDs installed
- Sealed, 8 hour rechargeable battery w/ power supply
- Easy-to-use controller and remote



LIGHTING & SAFETY



SNEEZE GUARD

We've designed this acrylic countertop shield to fit your Flash Bar Straight & Circular Segments. This acrylic countertop shield, also called a sneeze guard, is specifically chosen for and tested on the Flash Bar Straight & Circular Segments. The wide shield covers the width of the segment's workspace and offers an access hole large enough for serving.



LOCKING CABINET DOORS

- Left and Right Locking Doors
- (2) Enclosed Sideframes with (4) Feet
- Bottom ACP Frame with Panel and Cotter Pins
- Top Work Surface and Bottom Shelf
- Counter Pins



SHADE BRACKET

- The bracket can attach to any side frame
- Can hold a standard size umbrella pole of 1.5' diameter



STORAGE & TRANSPORT



ROLLING BASE FOR FLASH BAR

- For Straight, Circular and 90° segments.
- Only works with basic Stainless Steel Sink Kit & Grey Water Sink.
- Rolling base only works on hard flat surface
- Maximum of four segments can be moved while connected.
- Caster: 3"



FLASH BAR SEGMENTS SOLD SEPARATELY



FLASH BAR COVERS

The covers are also segmented just like the Flash Bar. Every Flash Bar segment has their own custom shaped cover. The covers can be configured to conform to the shape of the bar you have.



BACK BAR COVERS

The Flash Bar Backbar covers are made of high quality, water resistant polyester material that have a modular design to protect your equipment. There are two versions available to coordinate with whatever Backbar setup you may have.

A set of end cap covers will be needed for each set of Flash Backbar end caps per configuration to fully cover the unit

TRANSPORT CASES



FLASH BAR CASE

The Flash Bar Case is fitted with a guide inside. The guide is cut to precision so parts of your Flash Bar will fit and will not be damaged during transport.

Each case will fit one 90° Corner, 60° Corner or Straight segment.

DIMENSIONS

19" Deep x 39" Wide x 69" Tall
Caster: 4"



ROAD CASE

Each Road Case carries approximately two Flash Bar segments, depending on which pieces are packed.

DIMENSIONS

56" Deep x 32" Wide x 36" Tall
Caster: 4"



FLASH BAR BACKBAR CASE

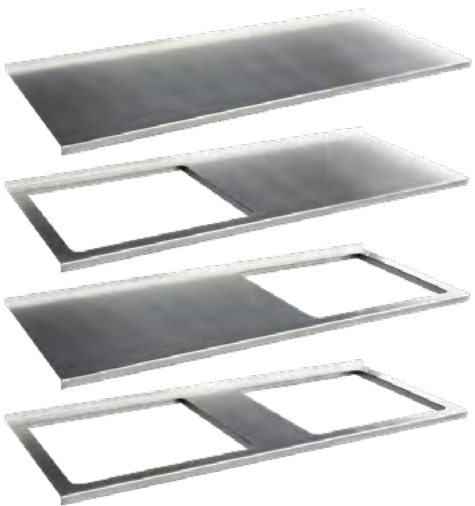
The Flash Bar Backbar Case is an open space case. Perfect size to fit your Flash Bar Backbar to protect during transport and while storing.

Each case will fit one Flash Bar Backbar.

DIMENSIONS

28" Deep x 60" Wide x 45" Tall
Caster: 4"

EXTRAS



FLASH BAR WORK SHELVES

- Work surface counter reconfiguration
- Additional shelving space
- Available in plain, dual-cutout, and left or right hand cutouts



EXTERIOR OPTIONS

The Flash Bar segment comes with white Aluminum Composite Panels and Black Acrylic Counters. Both the counter and the panels are inserts that attach to the stainless steel frame. The bar looks finished and modern as is, but there are hundreds of exterior upgrade options that fall within the material types below, that one can use to create a unique look.

UPGRADE OPTIONS FOR YOUR FRONT (CUSTOMER FACING PANELS)

HIGH PRESSURE LAMINATE PANELS - Comes in wood grains, planked wood, metallic, stone, and colorful patterns. The laminate is attached to the ACP Panel. See <https://Wilsonart.com/laminate/design-library> for a full list of finish options.

VINYL PRINTING - Wrap the bar in vinyl. Much like a car wrap - we can print most vector artwork including logos, pictures, patterns, and text assuming the design works with the shape of your bar. Vinyl comes in a Matte or Shiny Finish.

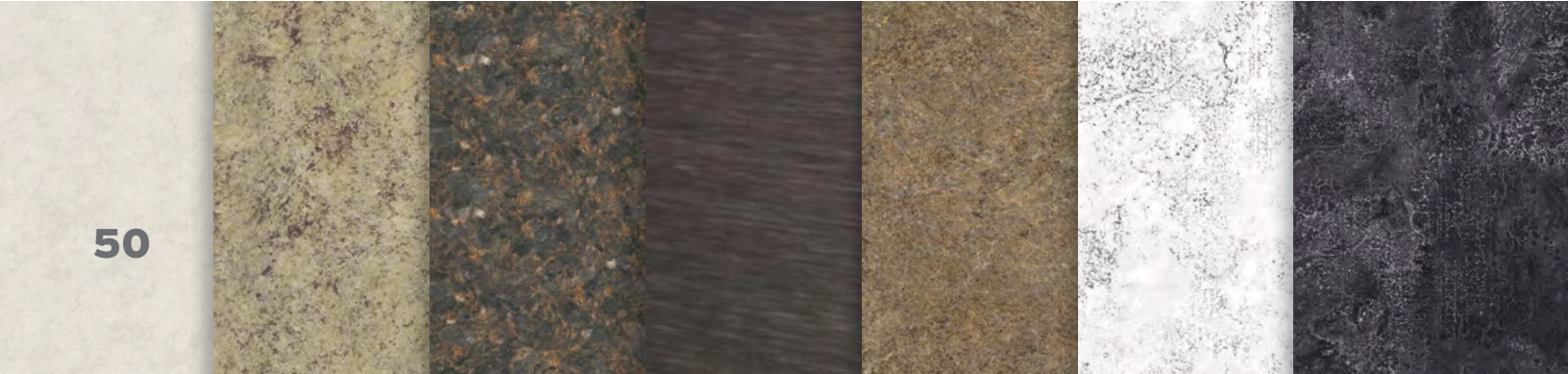
LED's - Comes with 8 color options and multiple speed and brightness settings. Controlled with a remote. Powered by a cordless battery or regular 12 Volt charging cord for US outlets

UPGRADE OPTIONS FOR YOUR COUNTERTOP

HIGH-PRESSURE LAMINATE COUNTERS
We can match your panel laminate selection. See <https://Wilsonart.com/laminate/design-library> for a full list of finish options.

SEA BOARD COUNTERS - Available in black or white. This is a marine grade material rated for horizontal install. Good for locations close to the water or environments with high humidity. This is the recommended counter top option if you wish who wish to use the bar outside.

Check out our gallery on page <?> to see some of our best work.



NSF CERTIFIED FLASH BAR

WHAT IS NSF CERTIFICATION?

Millions of people take the safety of their food, water and consumer products for granted on a daily basis. Why? Because of three letters: NSF. NSF certification is your key to making sure that the products you use meet strict standards for public health protection.

Having the Flash Bar NSF certified lets you know we met the strict standards and procedures imposed by NSF. From extensive product testing and material analyses to unannounced plant inspections, every aspect of a product's development is thoroughly evaluated before it can earn an NSF certification.



NSF FLASH BAR SEGMENTS

- Straight Segment
- Circular Segment
- 60° Corner Segment
- 90° Corner Segment
- Reverse 90° Corner Segment
- End Caps

NSF APPROVED ACCESSORIES

- 4 Basin Sink with Faucet & Drains
- Sink with Drainboard
- Drop-In Ice Bin
- Speed Rail
- LED
- Signage
- Laminate
- Flash Bar Cover
- Flash Bar Case
- Road Case



To see pricing and place an order please visit us at <https://theportablebarcompany.com> or contact us at 877-620-9543 or sales@theportablebarcompany.com for more information

BENEFITS OF A STAINLESS STEEL MODULAR DESIGN

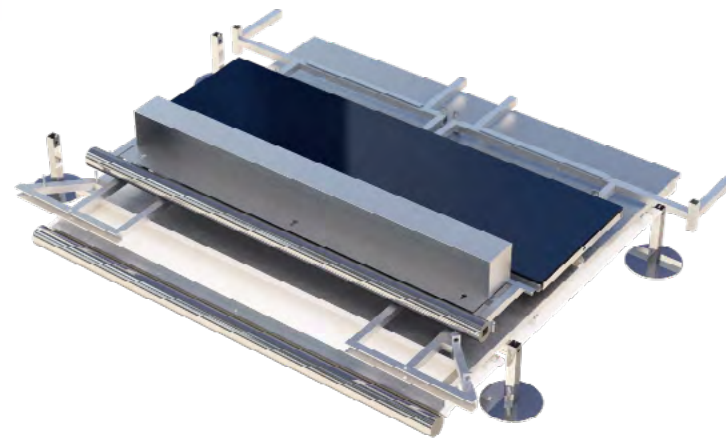


EASY TO TRANSPORT & STORE

Every segment breaks down into smaller pieces for easy transport or storage. The heaviest piece weighs less than 20 pounds. When broken down, each piece lies flat or stacks.

FAST SET UP & TAKE DOWN

Each segment takes 2 minutes to set up or take down. Every piece locks into place with little effort, NO TOOLS REQUIRED ON MOST SEGMENTS.



OPTIONAL ACCESSORIES

There is a wide selection of accessories to pick from. You can add ice bins, sinks, speed rails, LED lighting, wood counters, signage, laminated paneling, and more.

RETROFIT

All the segments and accessories can be mixed -and matched allowing the customer to order additional pieces, replacement parts, and more accessories at a later point.

DURABLE CONSTRUCTION

The Flash Bar's internal structure is 100% stainless steel. It is sturdy enough to be used every day as a substitute for a permanent bar. It's also resilient enough to endure the stress of constant transport.

EASY TO CLEAN

The working surface, customer counter, and accessories are easy to remove. This allows the customer to keep every inch of the bar clean with minimal effort.



WHO IS USING THE FLASH BAR AND HOW?

Substituting a Permanent Structure or Using it as a Mobile Equipment Solution

Benefits for using the Flash Bar as a Substitute for a Permanent Structure

RESTAURANTS BARS HOTELS CASINOS COUNTRY CLUBS BANQUETTE HALLS CONCERT VENUES STADIUMS

The bar's sturdy stainless steel construction makes the Flash Bar durable enough for heavy everyday use, just like a permanent bar.

Investing in a modular bar system as a substitute for a permanent bar allows a venue to add bar space in weeks for a fraction of the cost (compared to a full blown construction project.) Plus there are far less permit restrictions on modular set ups as compared to permanent ones.

Adding bar space to most venues will help increase profit by decreasing the time customers spend waiting in line for service. Serve more customers in less time.

By having the option to store the bar venues can take

advantage of space that's only available certain times of the year, such as an outdoor deck or patio.

Having a bar that breaks down and sets up in minutes gives venues more flexibility in catering to customer's specific requests. Potential customers renting out the space would have the option to move the bar, change the shape, and even change the look of the bar. All of which would be impossible with a permanent bar.

Benefits of using the Flash Bar as a Mobile Equipment Solution.

MOBILE BAR BUSINESSES TRADESHOW EXHIBITORS RENTAL COMPANIES CATERERS BANQUET HALLS
PROMOTIONAL TAIL GATING

Inspired by the success of the Portable Bar Company's foldable bar line, the Flash Bar's original purpose was to give mobile hospitality services a competitive edge by making high quality equipment companies can use on the go.

It's designed to be easy to transport . When broken down the heaviest piece is less than 20lbs and each piece either stores flat or stacks.

The Flash Bar's modular system makes looking professional on the go effortless. Set up or take down of one segment less than 2 minutes and requires no tools. Setting up quickly at many different places is one less thing you have to plan for.

The same amount of pieces can be set up in different formations so every set up will look tailor made for each event.

The bar's customizable panels, ability to change shape, and retrofit different accessories or segments, maximizes a company's range in providing ideal services to unique events.

The Flash Bar is purchased in segments and additional segments can be retrofitted. This means replacing pieces and upgrading the bars accessories will always be an easy option.

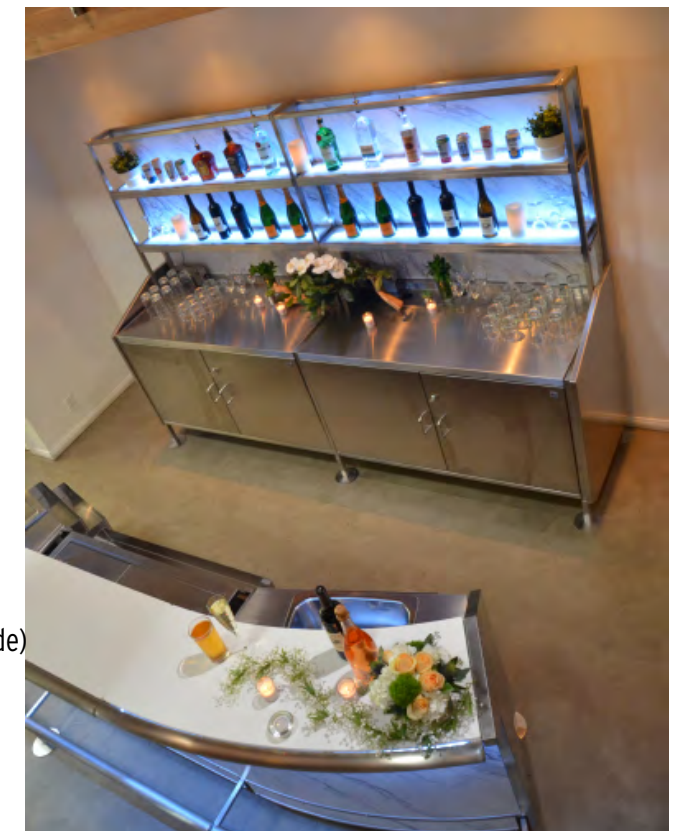
GALLERY



Products: Flash Bar and Back Bar
Flash Bar Shape: 3 Circular Segments (11'5" Wide)
Exterior: Matte Vinyl Print , Black Seaboard Counters
Accessories: 2 Drop-In Ice Bins and Sink
Backbar: 2 Flash Bar Backbars linked
Backbar Addons: Cabinet door, LED light, and Top Sign Holder



Products: Flash Bar and Back Bar
Flash Bar Shape: 1 Straight Segment & 2 Circular Segments (12'3" Wide)
Exterior: Calcutta Marble Laminate & White Seaboard Counters
Accessories: Sink, Drop-in Ice Bin, Under Bar Ice Bin & Speed Rails
Backbar: 2 Flash Bar Backbars linked
Backbar Addons: Cabinet door and LED light





AMANGANI RESORT

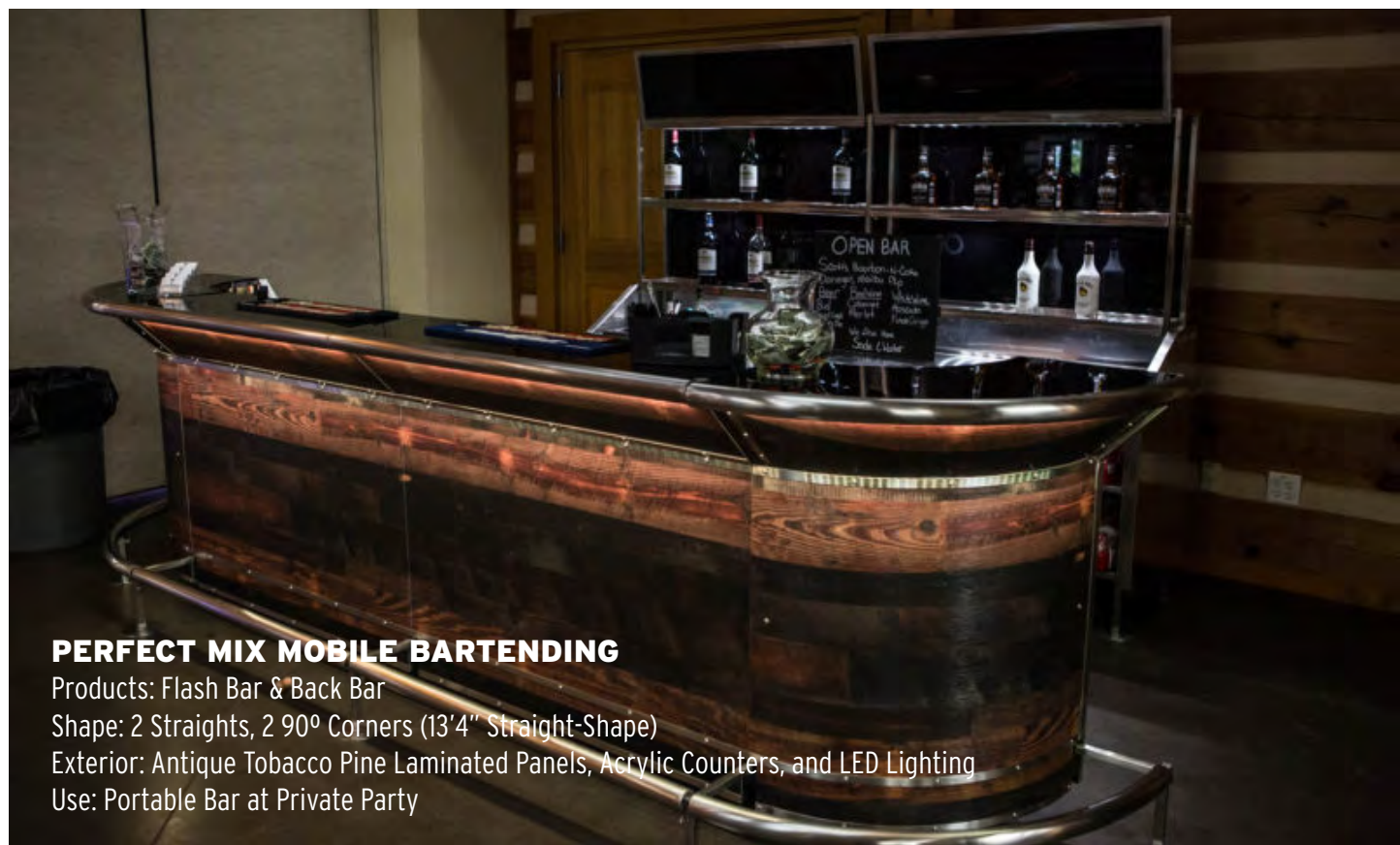
Product: Flash Bar and Back Bar

Shape: 1 Straight Segment & 2 90° Segments (9'5" Straight-shape)

Exterior: Dubois Concrete Laminated Panels & Acrylic Counters

Accessories: Single Back Bar

Use: Portable Patio Bar



PERFECT MIX MOBILE BARTENDING

Products: Flash Bar & Back Bar

Shape: 2 Straights, 2 90° Corners (13'4" Straight-Shape)

Exterior: Antique Tobacco Pine Laminated Panels, Acrylic Counters, and LED Lighting

Use: Portable Bar at Private Party



SILVER MOON

Product: Flash Bar

Segment Count: (3) Straights, (2) 90° Corners

Use: Mobile Beer Serving Station

Exterior: Vinyl Printing



SWIFT & STIFF

Products: Flash Bar

Shape: 2 Straights, 2 90° Corners (13'4" Straight-Shape)

Exterior: Salem Planked Chestnut Laminate Panels

Use: Mobile Bartending Business



BARTENDO

Product: Flash Bar

Segment Count: (1) Straight, (2) 90° Corners

Use: Wedding

Exterior: Vinyl Print on White Aluminum Composite Panel

CLICK HERE

To Create your own Flash Bar with our Bar Builder on our website

Takes less than 5 minutes to fill out. It calculates the price, the bar footprint, and generates a rendering in real-time.

JOCKEY BOX COVER

Cover your cooler. Market your beer.

Each Jockey Box Cover folds easily and is customizable to help present your brands image. The side panels are a white ACP and you can change it to any other color by adding graphics. The top and bottom panels are real birch wood with a black stain or walnut stain finish. Our jockey box covers are designed to fit most 28 and 48 quart coolers.

FEATURES

- Heavy duty construction
- Durable, glossy White ACP panels
- Top and bottom panels real birch wood with optional Walnut stain or Black stain finish
- Folds for easy portability

DIMENSIONS & WEIGHT

35.5 x 16.375 x 16.75 in

Weight: 29 lbs

OPTIONAL UPGRADES

- Black Finish
- Graphics
- Carrying Case





877-620-9543

sales@theportablebarcompany.com

www.theportablebarcompany.com

2515 Camino Del Rio South

Suite 130

San Diego, CA 92108

View the latest copy of the catalog at
<https://theportablebarcompany.com/catalog>