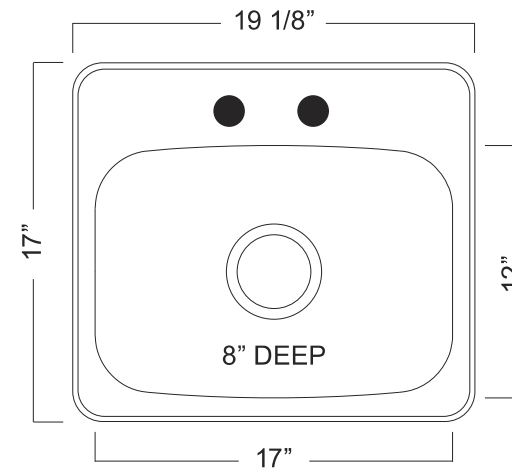




STAINLESS STEEL KITCHEN SINK:

Single Bowl Dual Mount Series

- 20 gauge
- Mirror deck & silk bowl
- Center drain wastehole location
- Ultra-Quiet™ sound deadening
- 21" cabinet is recommended minimum
- Limited lifetime warranty
- Installation hardware and template included
- Shipping weight: 8 lbs
- Heat Resistant: 2750 degrees F





POLISHED CHROME PFISTER BAR FAUCET

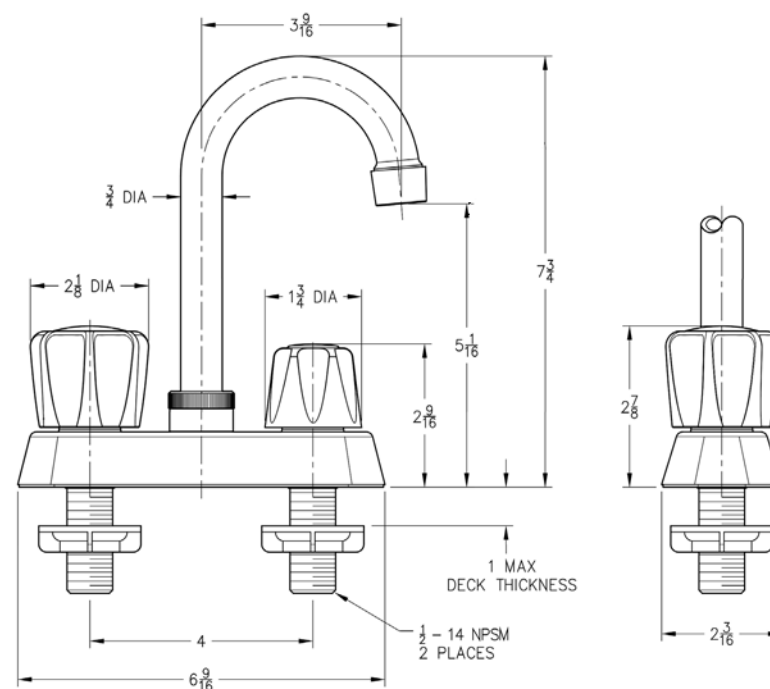
- Meets ADA/ANSI A117.1 requirements, ensuring accessibility to all disabled persons
- Product complies with NSF/ANSI 372 and conforms with lead content requirements for "lead-free" plumbing as defined by California, Vermont, Maryland, and Louisiana state laws and the U.S. Safe Drinking Water Act.
- Includes decorative deckplate
- Trade exclusive faucet
- Includes all installation hardware required

Features

- 1.8 GPM Flow Rate (G171 Only)
- 2.2 GPM (8.3 L/M) Flow Rate (171 Only)
- Metal Verve® Handles
- Washerless Valves
- Pforever Warranty®

Code Compliance

- Pfister products are designed and manufactured in compliance with the following standards and codes:
- IAPMO Certified
 - CSA B125 Certified
 - ASME A112.18.1
 - NSF 61/9 Annex G (Low lead) (G171 Only)
 - Cal Green Compliant (G171 Only)





MOEN 3.5in Composite Drain / Stainless Steel

- Stainless Steel Drop In Drain
- Easy Assembly





FlashBar Dual Function Shelf with Cutout

