

# FLASH BAR™

## MODULAR SYSTEMS

### DIMENSIONS

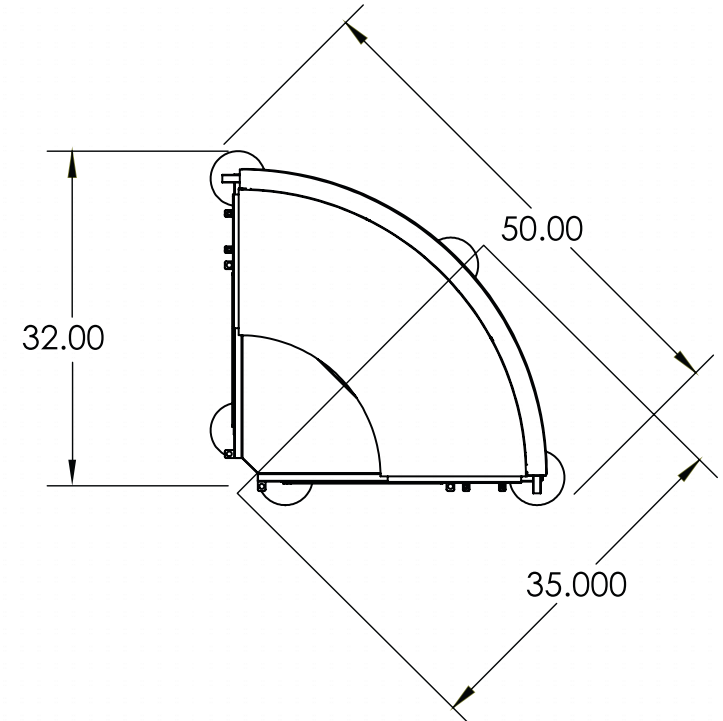
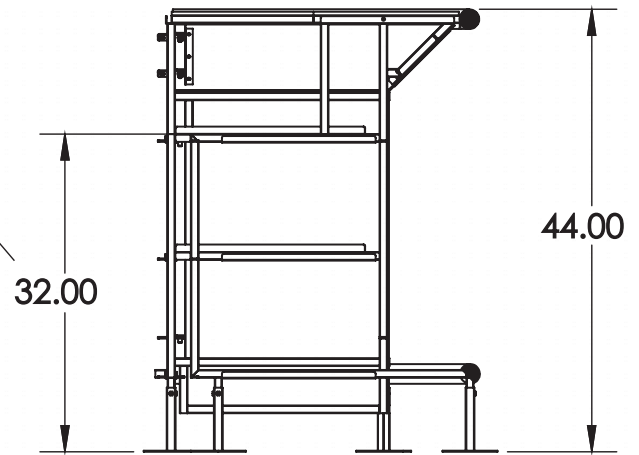
90° Corner Segment.....	2
Reverse 90° Segment.....	4
60° Corner Segment.....	6
30° Corner Segment.....	8
Straight Segment.....	10
Accessories	
Drop-in Ice Bin.....	13
Speed Rail.....	16
4-Basin Sink.....	17





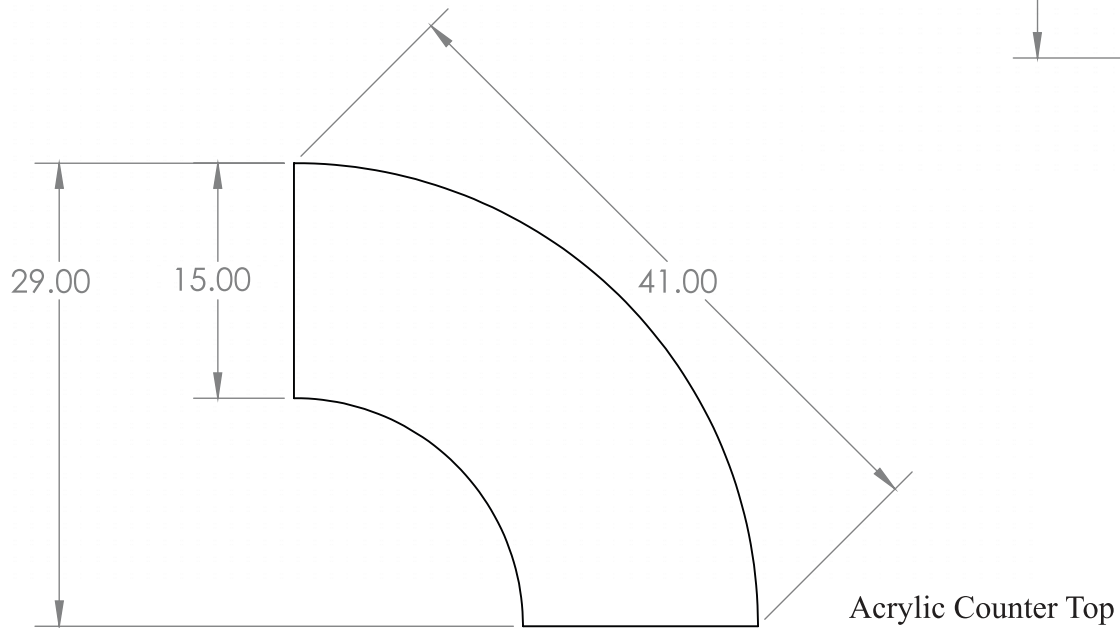
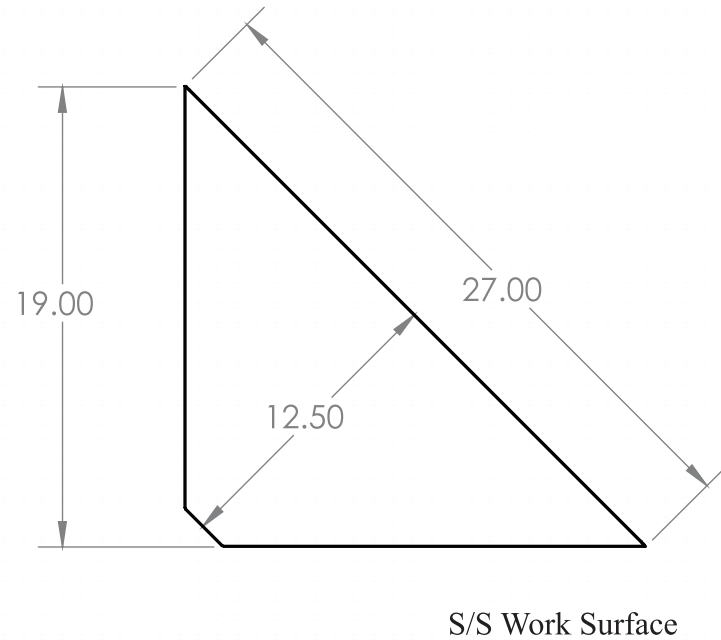
## 90° Corner Segment

Height from ground to Work Surface



*\*\*Note: Images are approximate; they have been rounded to the nearest whole number.*

## 90° Corner Segment

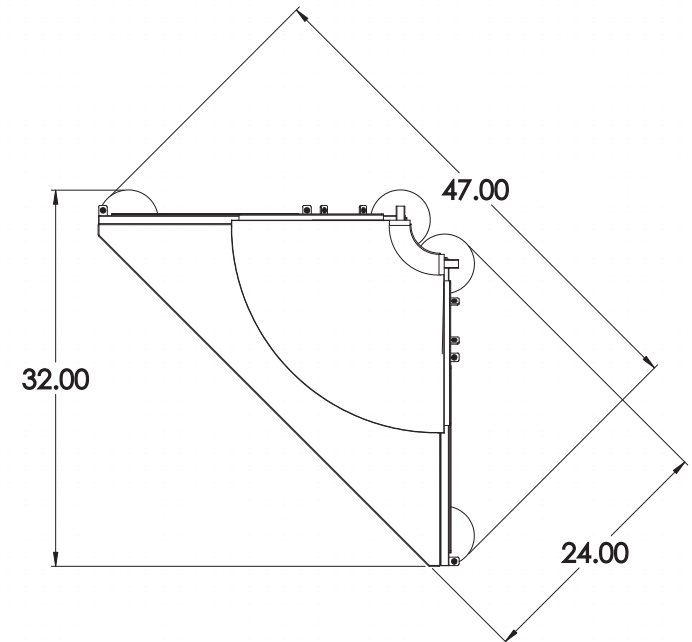
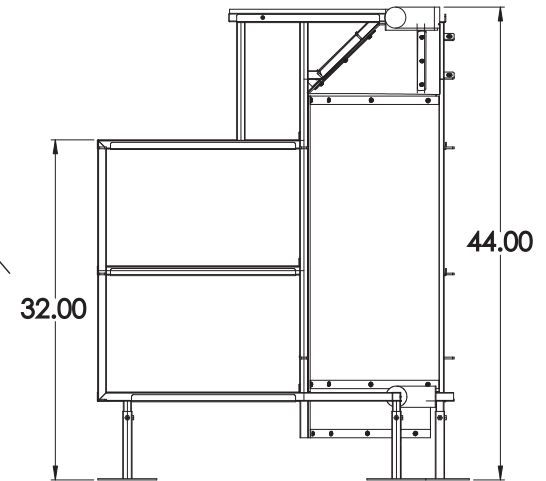


*\*\*Note: Images are approximate; they have been rounded to the nearest whole number.*



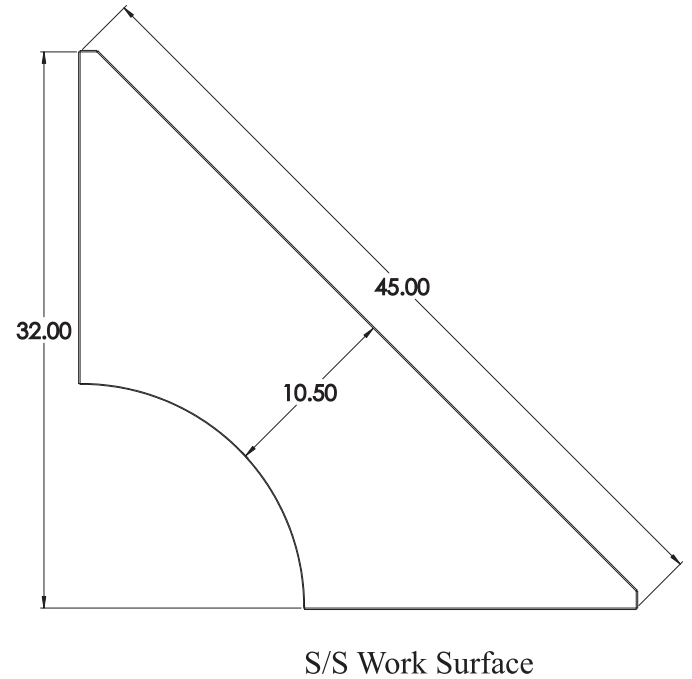
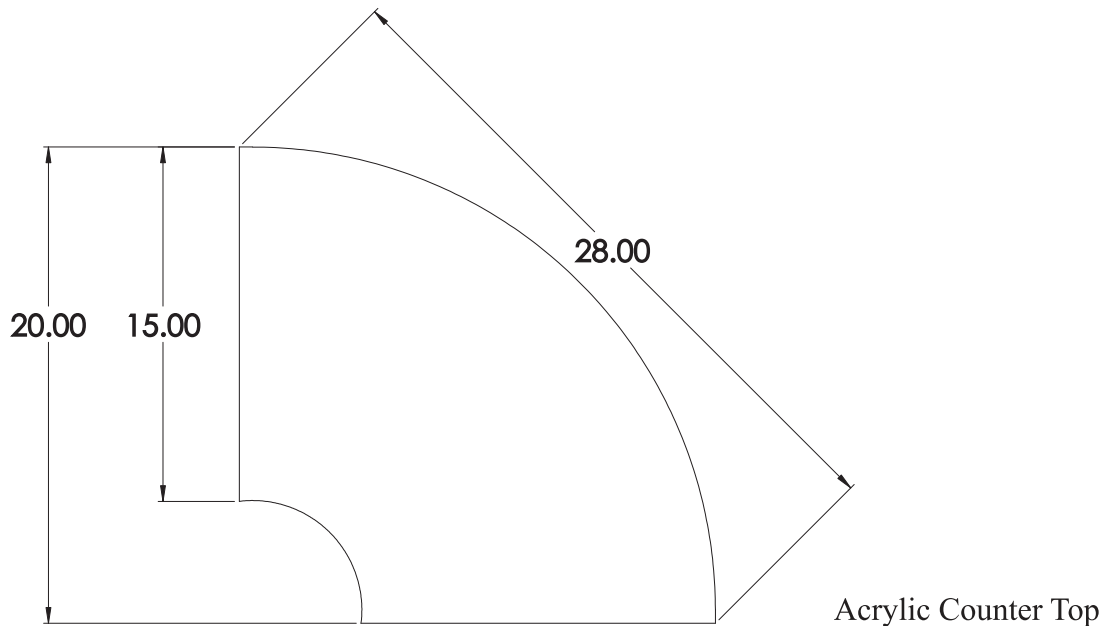
## Reverse 90° Corner Segment

Height from ground to Work Surface



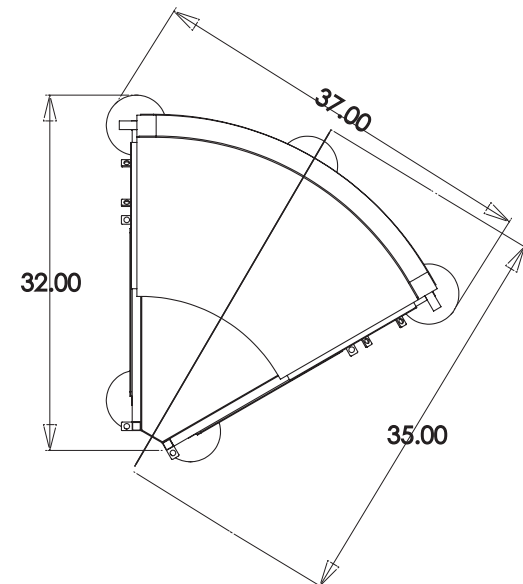
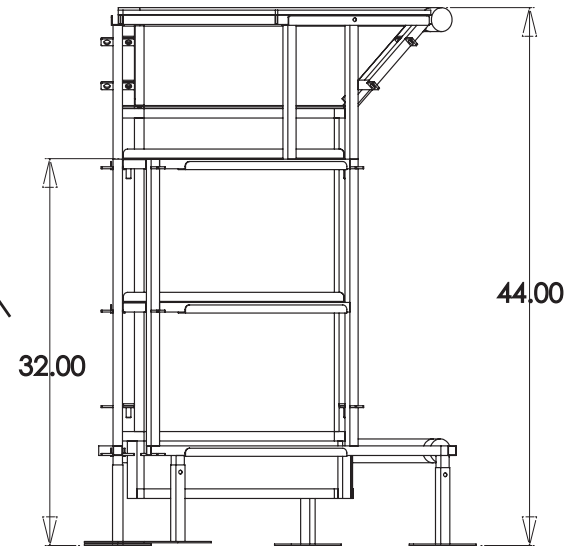
*\*\*Note: Images are approximate; they have been rounded to the nearest whole number.*

# Reverse 90° Corner Segment



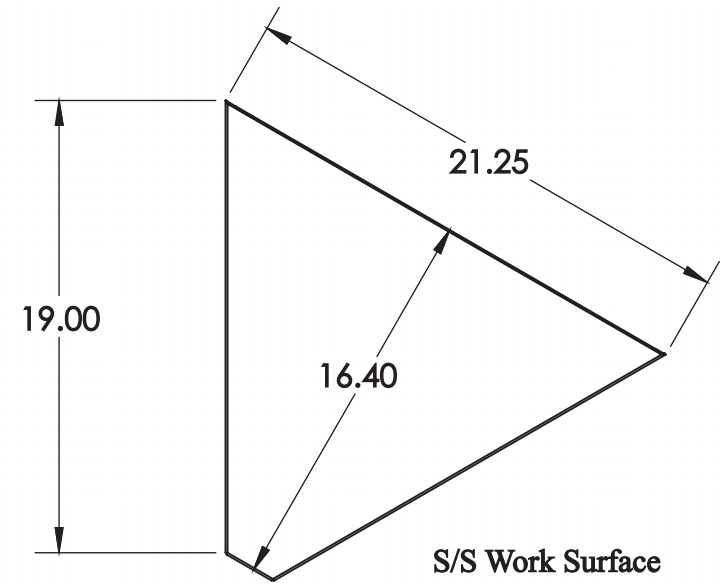
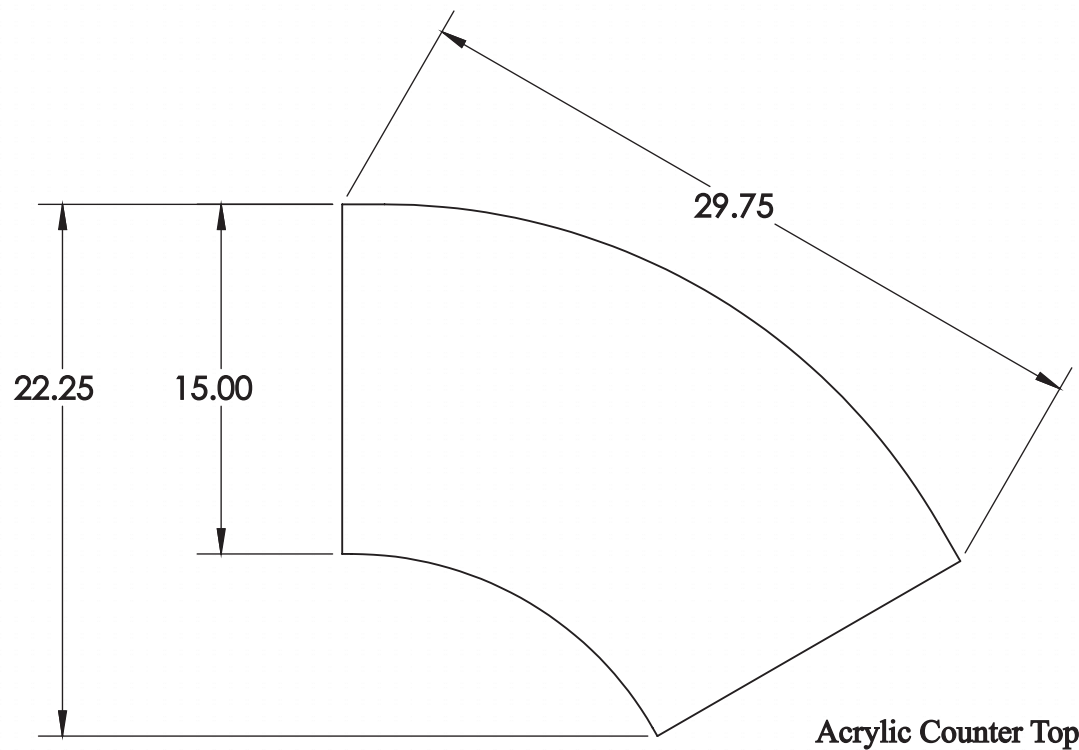
## 60° Corner Segment

Height from ground to work surface



*\*\*Note: Images are approximate; they have been rounded to the nearest whole number.*

## 60° Corner Segment

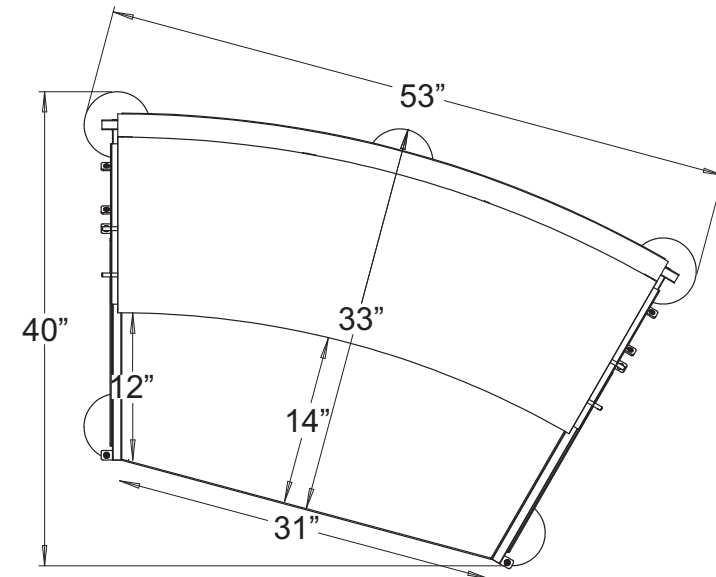
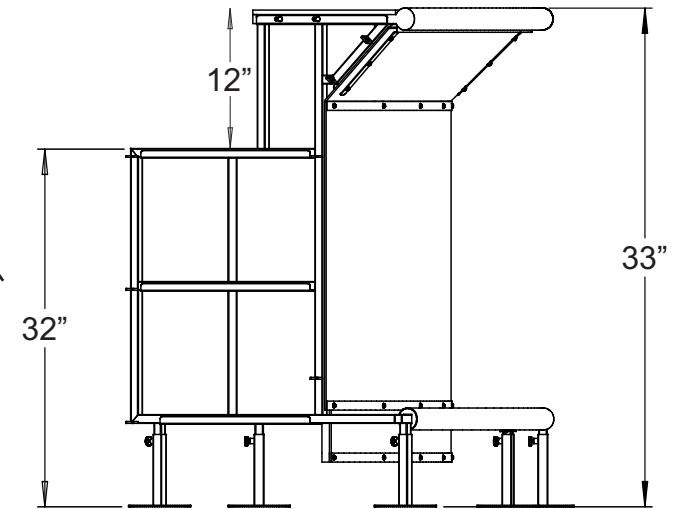


*\*\*Note: Images are approximate; they have been rounded to the nearest whole number.*



## 30° Corner Segment

Height from ground to work surface

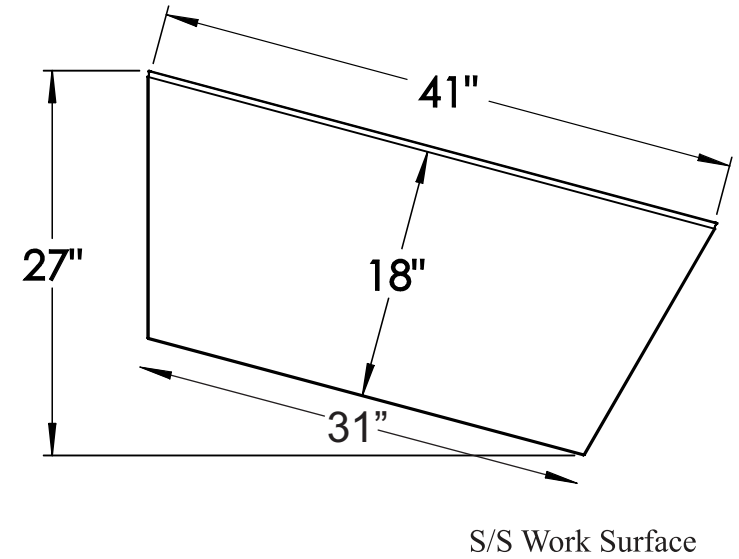
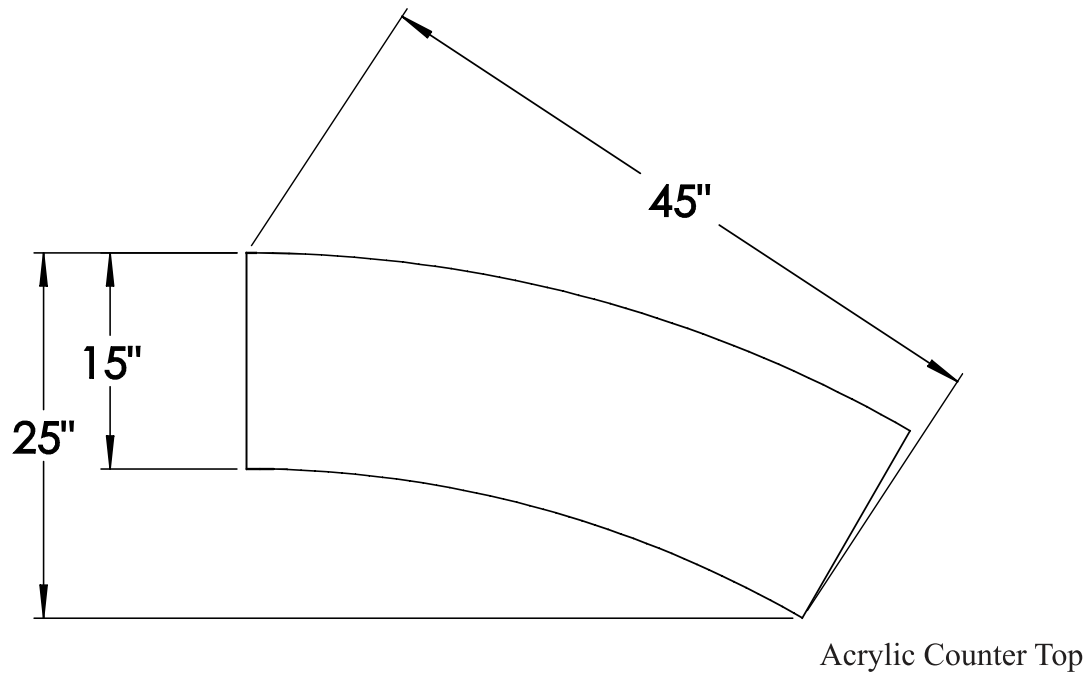


*\*\*Note: Images are approximate; they have been rounded to the nearest whole number.*





## 30° Corner Segment

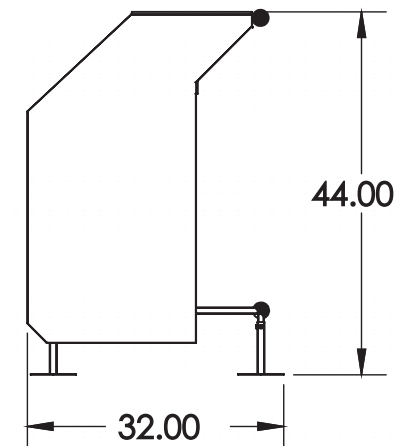
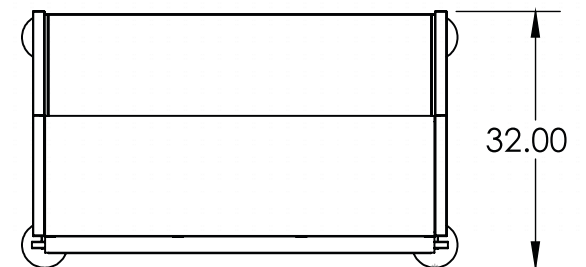
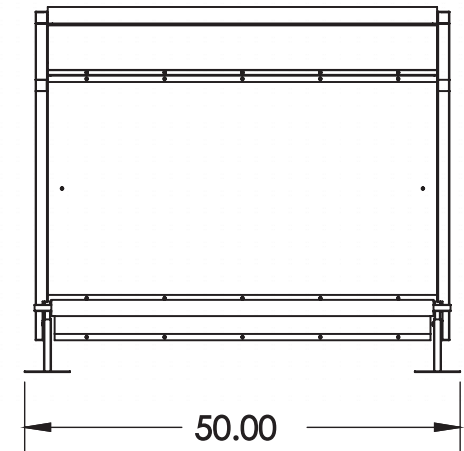


*\*\*Note: Images are approximate; they have been rounded to the nearest whole number.*



## Straight Segment

Height from ground to Work Surface = 32"

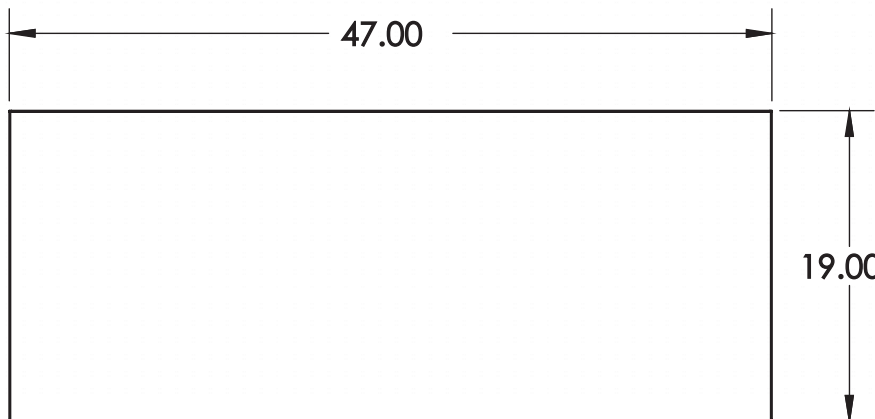
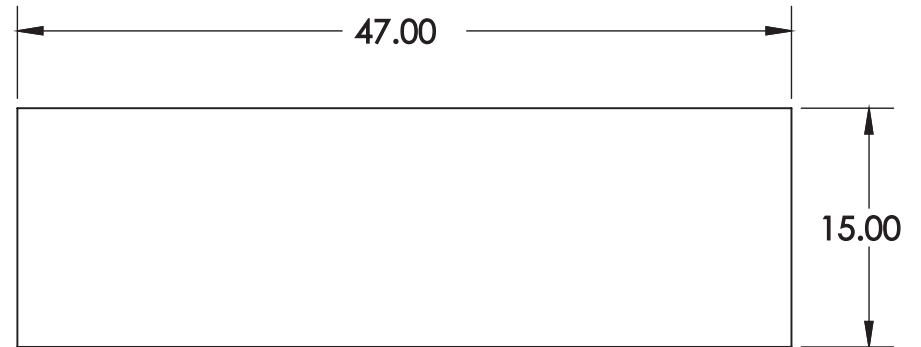


*\*\*Note: Images are approximate; they have been rounded to the nearest whole number.*



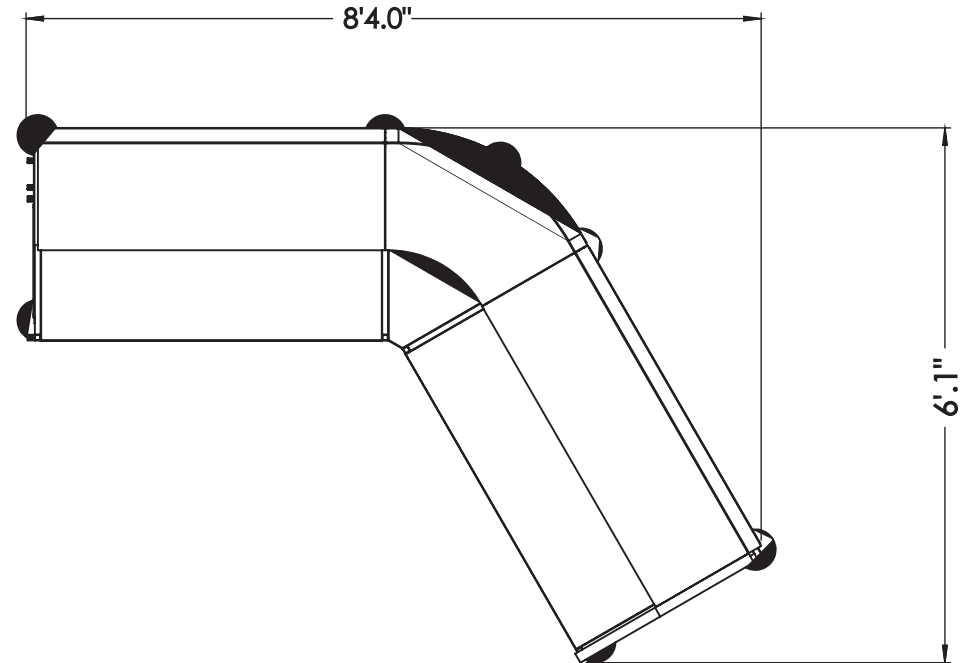
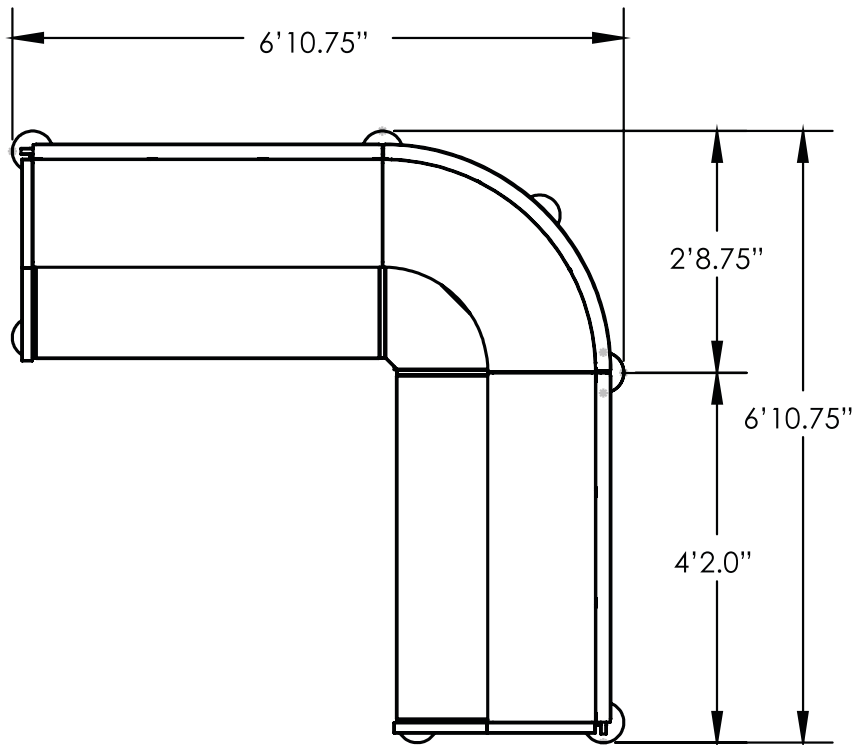
## Straight Segment

Acrylic Counter



S/S Work Surface

*\*\*Note: Images are approximate; they have been rounded to the nearest whole number.*



*\*\*Note: Images are approximate; they have been rounded to the nearest whole number.*



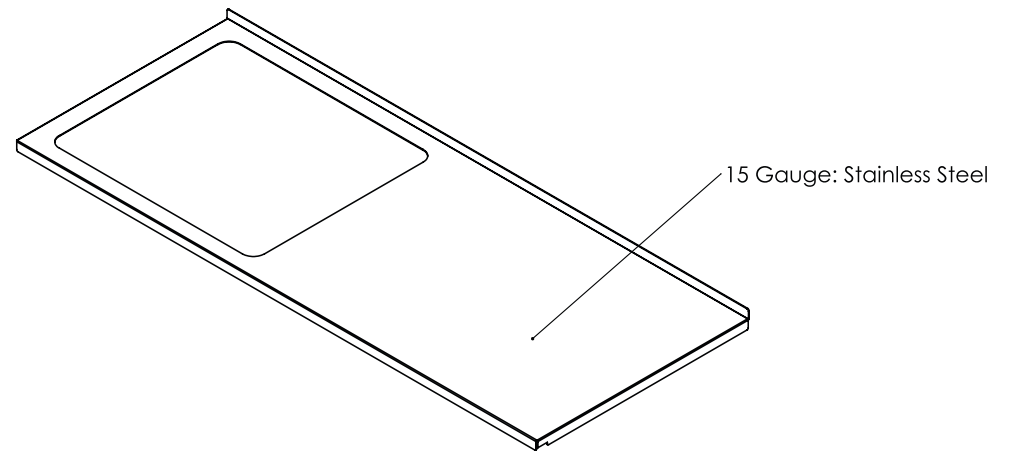
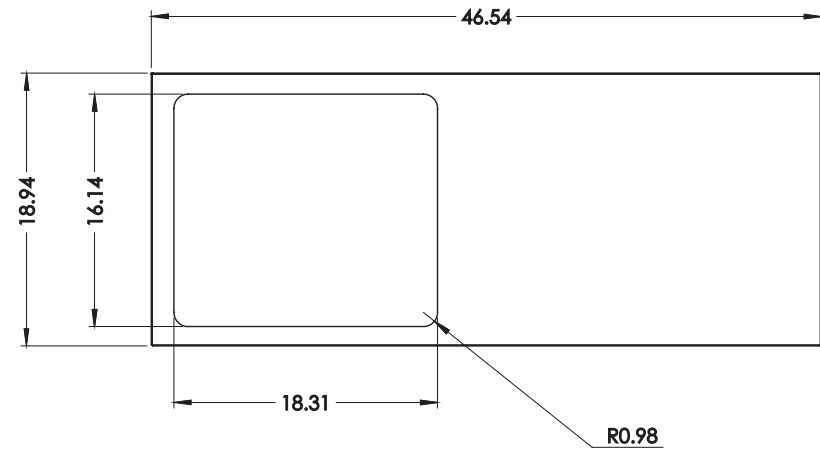
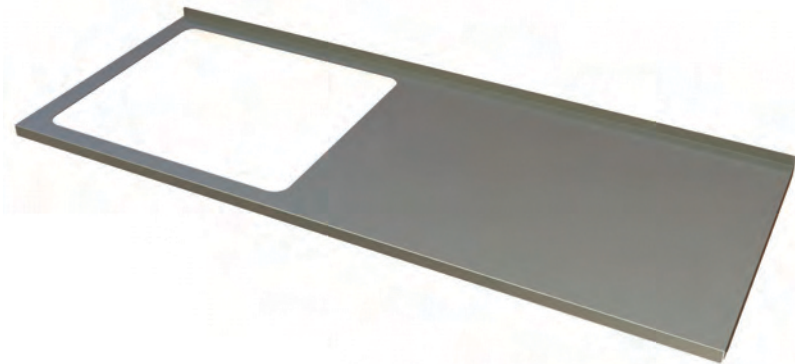
## Drop-in Ice Bin





# Drop-in Ice Bin

Flash Bar Dual Function Shelf with cutout

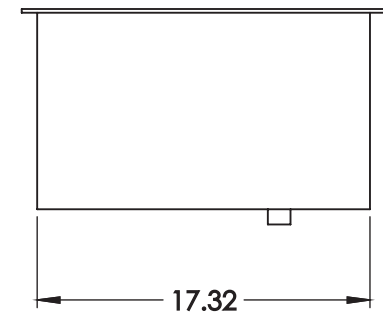
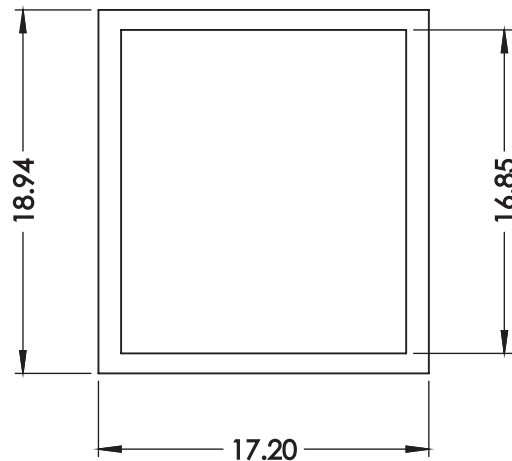
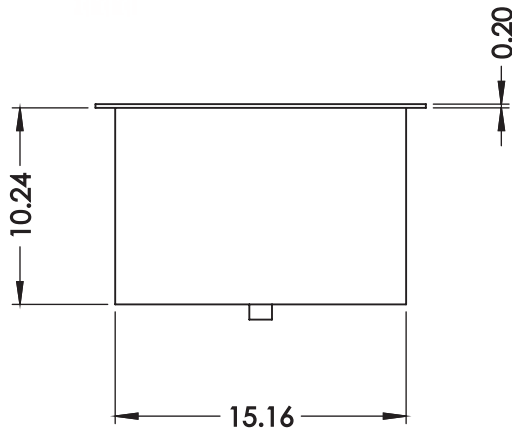
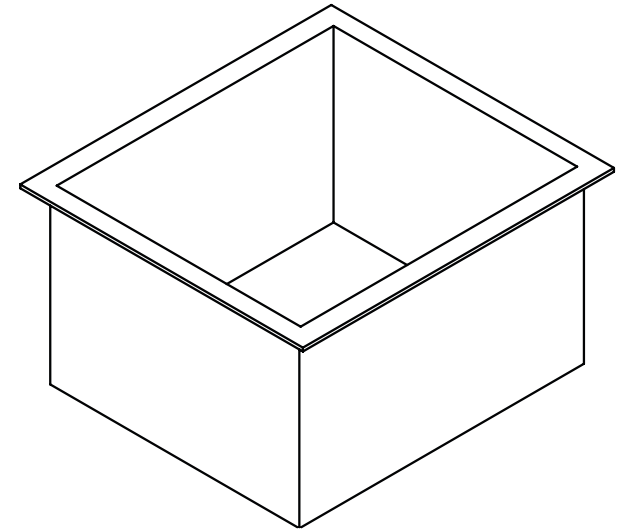
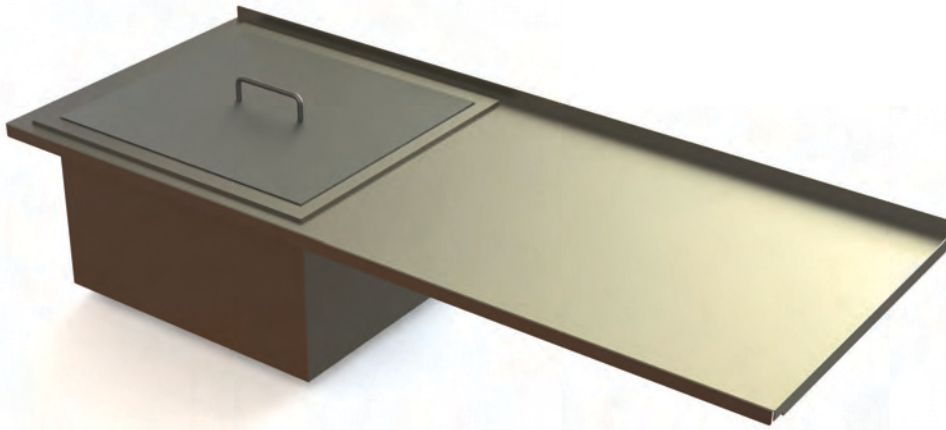


*\*\*Note: Images are approximate; they have been rounded to the nearest whole number.*



## Drop-in Ice Bin

Flash Bar Stainless Steel Ice Bin with lid  
Approx: 15d x 17w x 10d

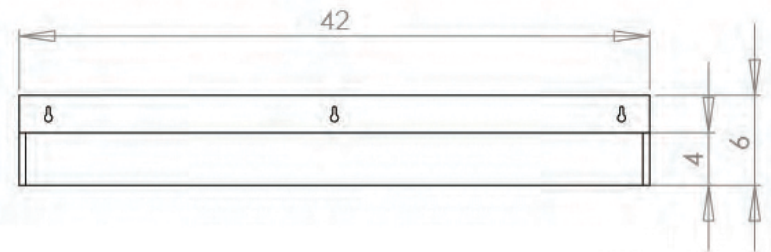
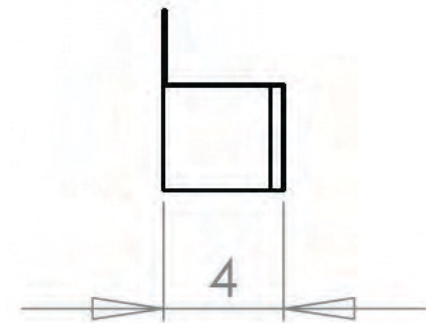
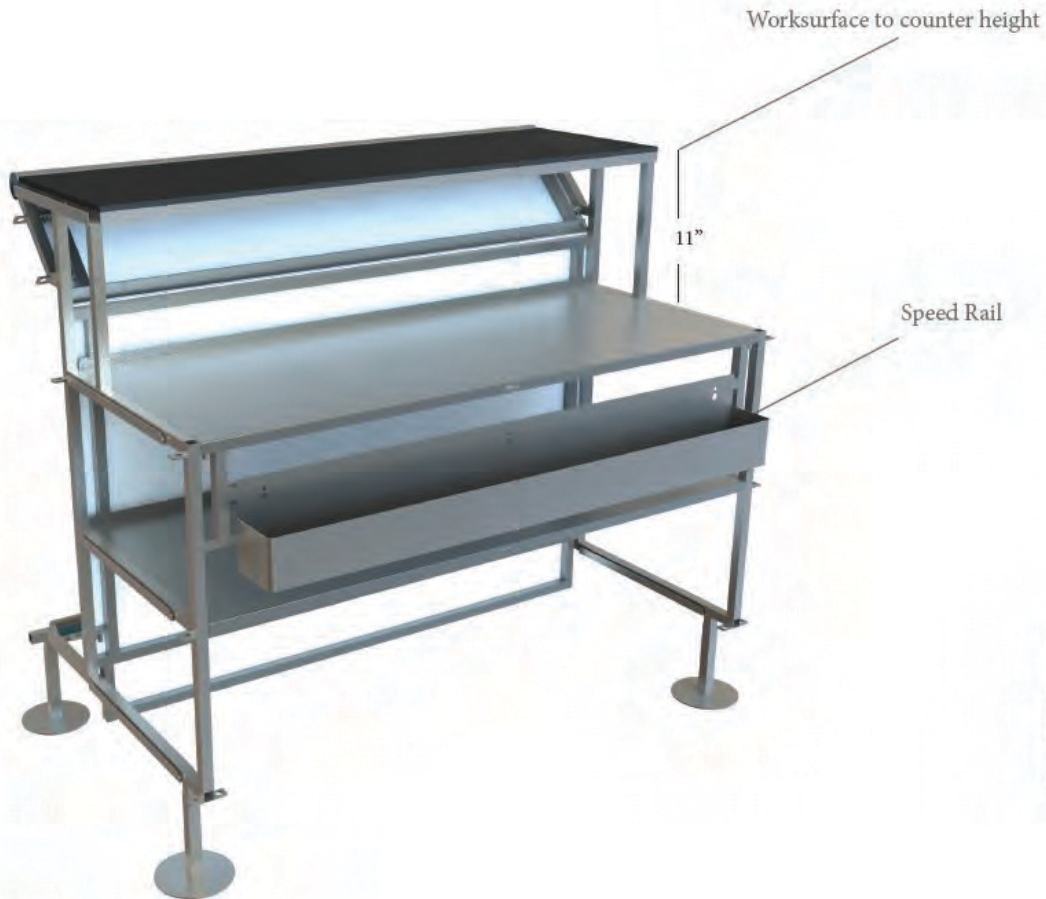


*\*\*Note: Images are approximate; they have been rounded to the nearest whole number.*



# Speed Rail

\* Speed Rail will accommodate a quantity of up to 10 quart or liter bottles



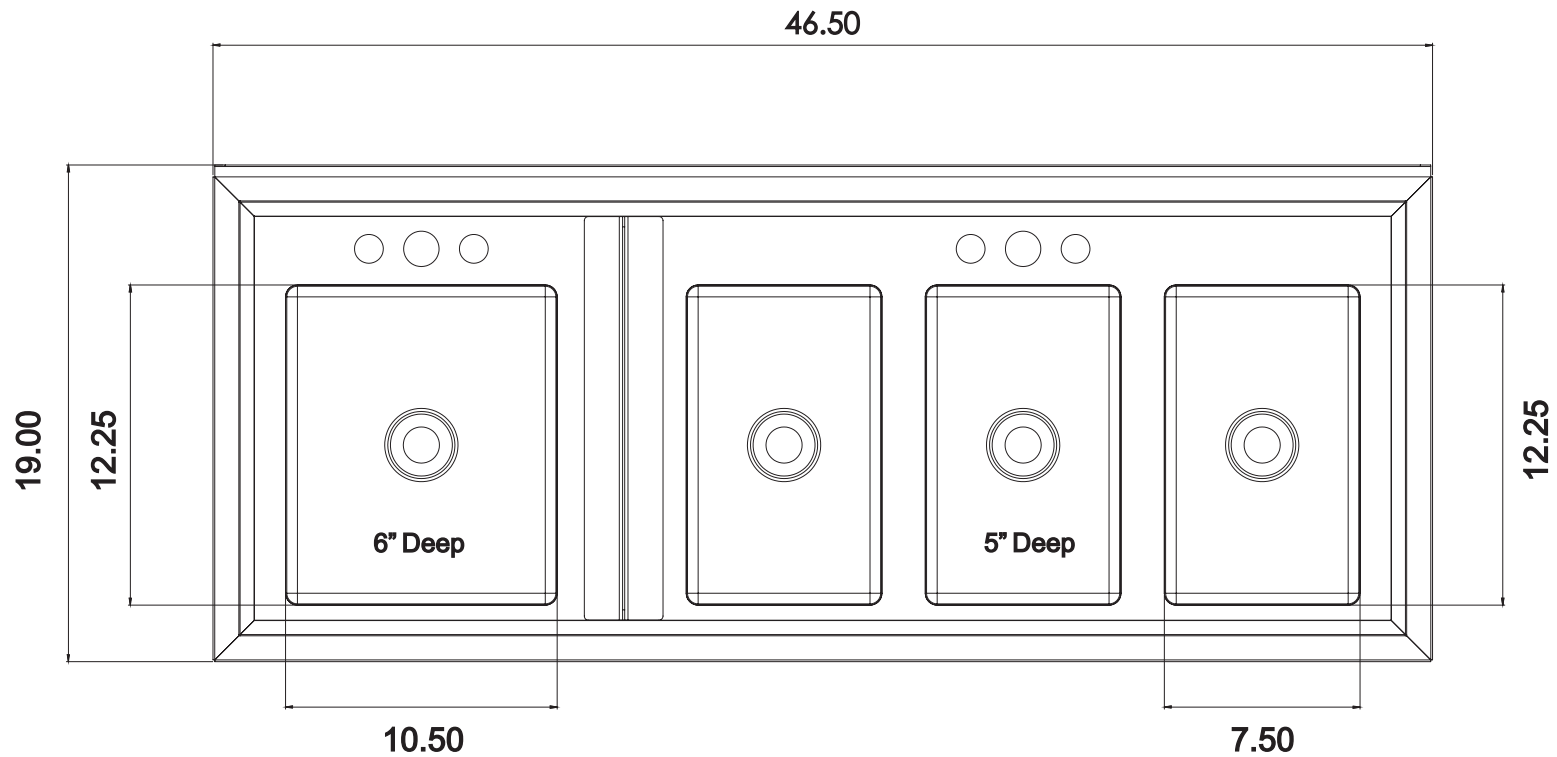
\*\*Note: Images are approximate; they have been rounded to the nearest whole number.

## 4 Basin Sink



\*Straight segment and plumbing components are not included.

## 4 Basin Sink



*\*\*Note: Images are approximate; they have been rounded to the nearest whole number.*