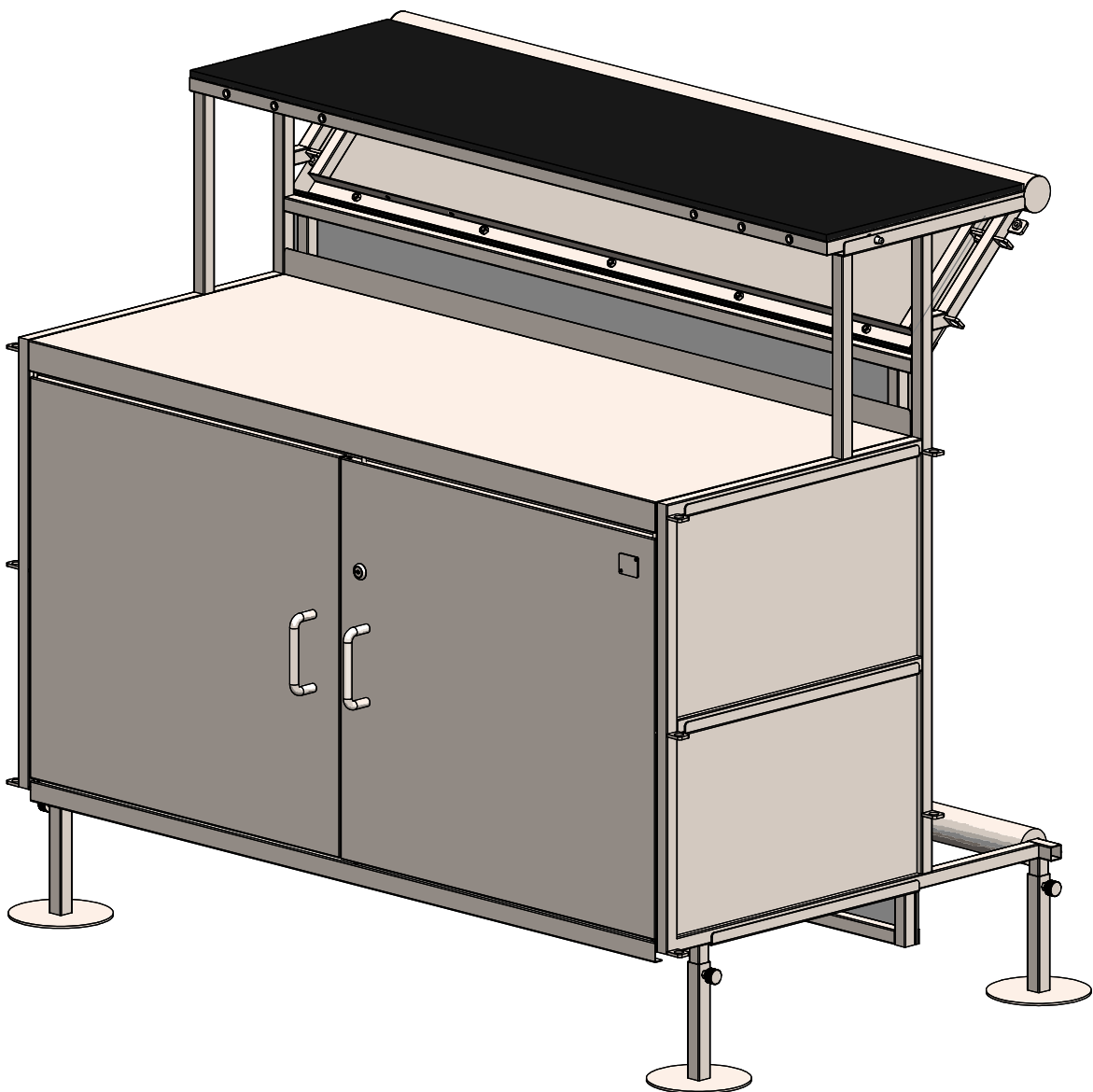
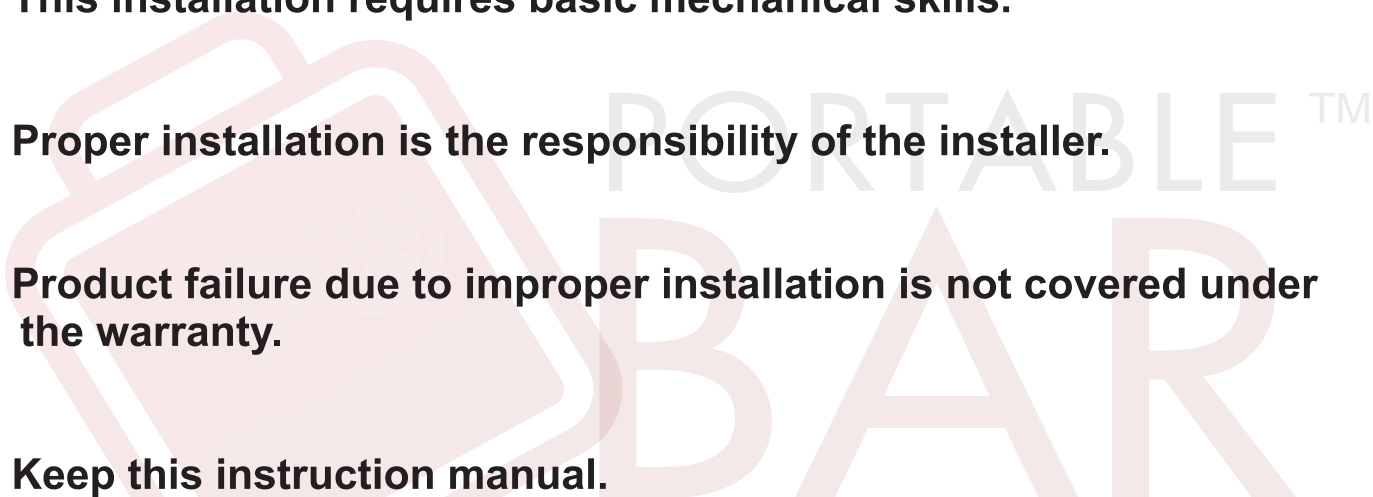


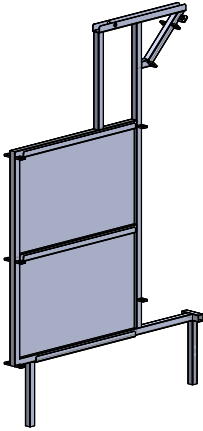


FLASHBAR STRAIGHT SEGMENT WITH LOCKING DOORS SETUP GUIDE

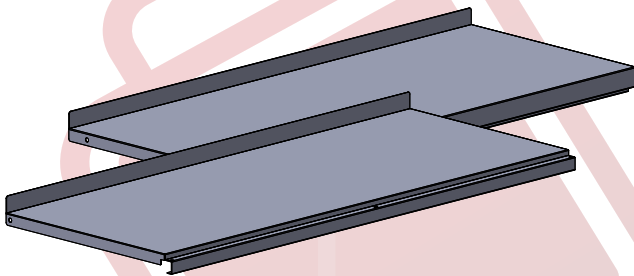


- **Read all the instructions before installing.**
 - **Remove all packing materials before you start.**
 - **Remove all protection films from acrylic panels.**
 - **This installation requires basic mechanical skills.**
 - **Proper installation is the responsibility of the installer.**
 - **Product failure due to improper installation is not covered under the warranty.**
 - **Keep this instruction manual.**
- 

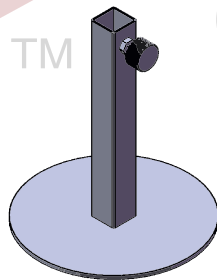
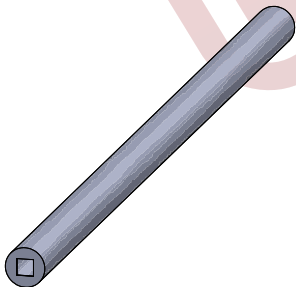
Guarded Side Panel
QTY: 2



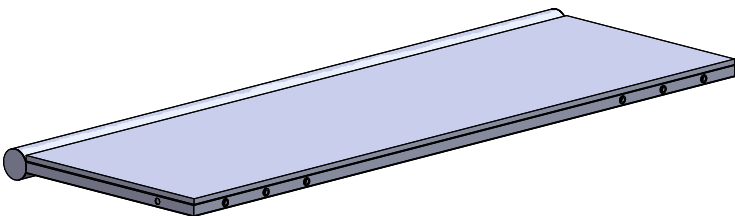
Bottom Shelf and Working Surface
QTY: 1ea



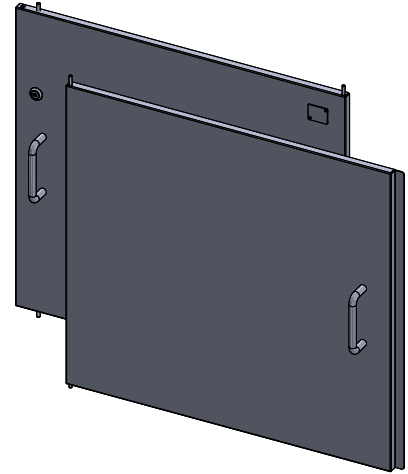
Foot rail and foot
QTY: 1 QTY: 4



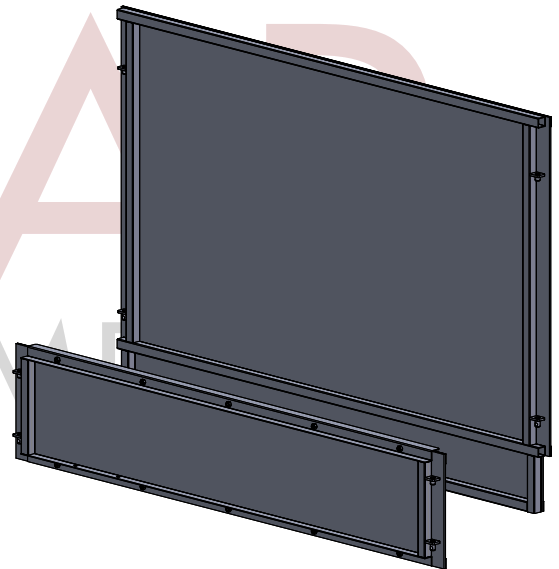
Counter Top
QTY: 1



Left Door and Right Door with Lock
QTY: 1ea



Bottom and Upper ACP Panels
QTY: 1ea



Straight and Ring locking pins
QTY: 2 QTY: 12



Note: Parts are not to scale.

STEP 1: Start by joining the side frame and feet together. Tighten the feet up with thumb screws.

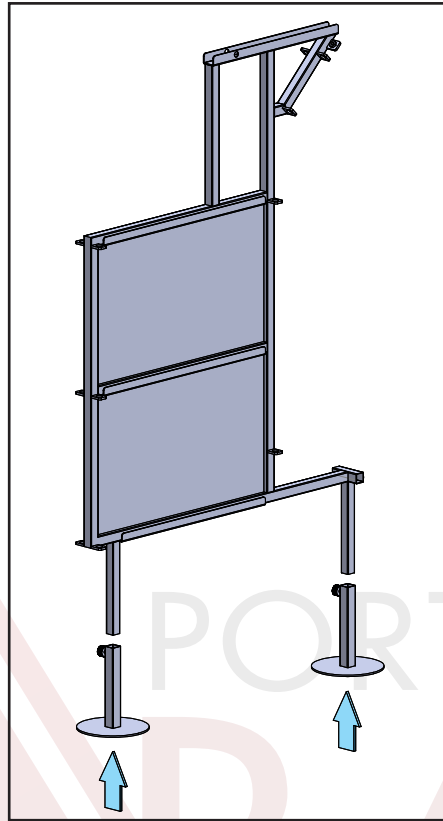


Figure 1

STEP 2: Follow the figure below (2) to install the foot rail.

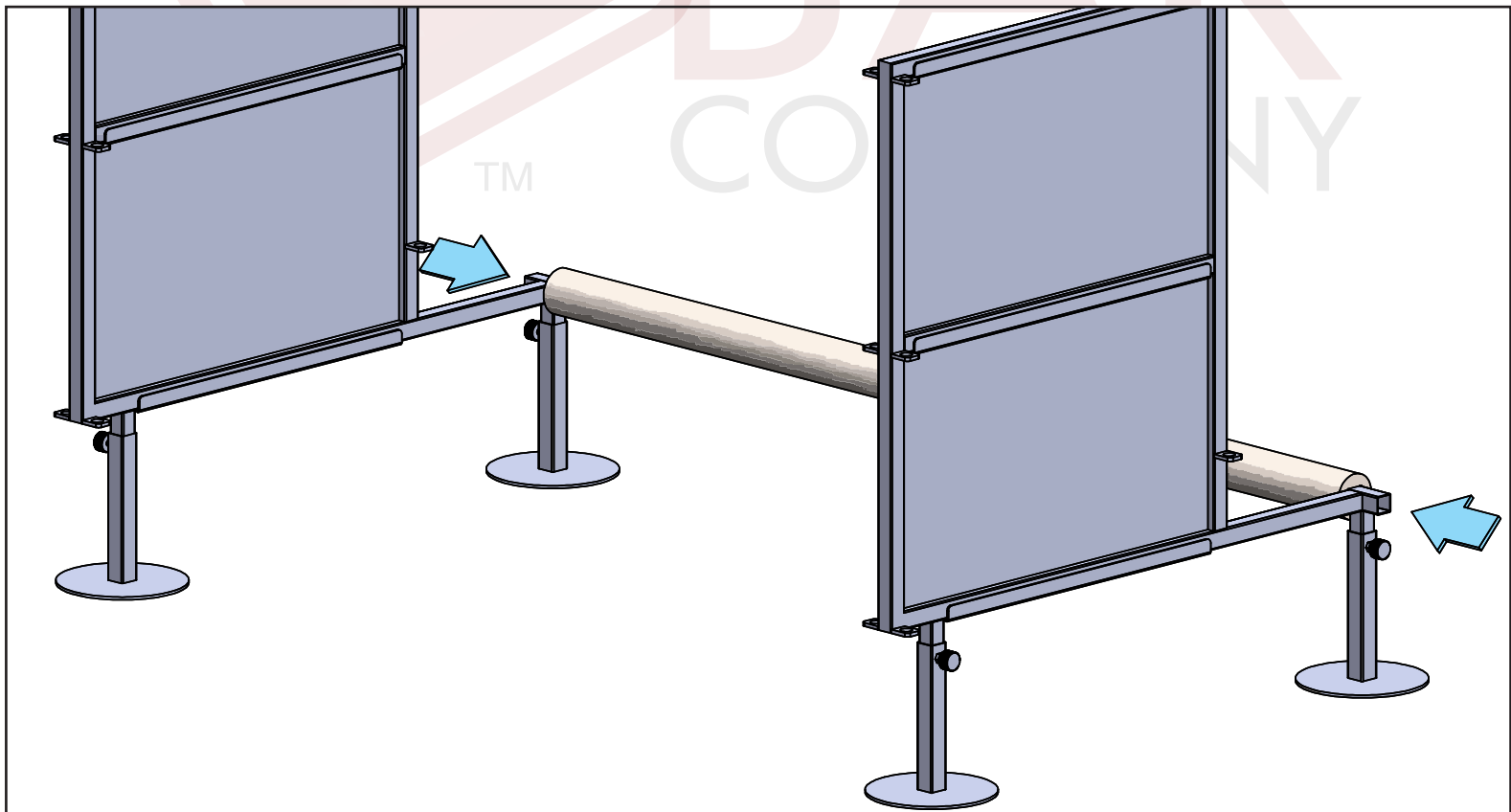


Figure 2

STEP 3: Install the lower ACP panel by aligning the four posts located at the sides of the ACP panel with the tabs on the side frames.

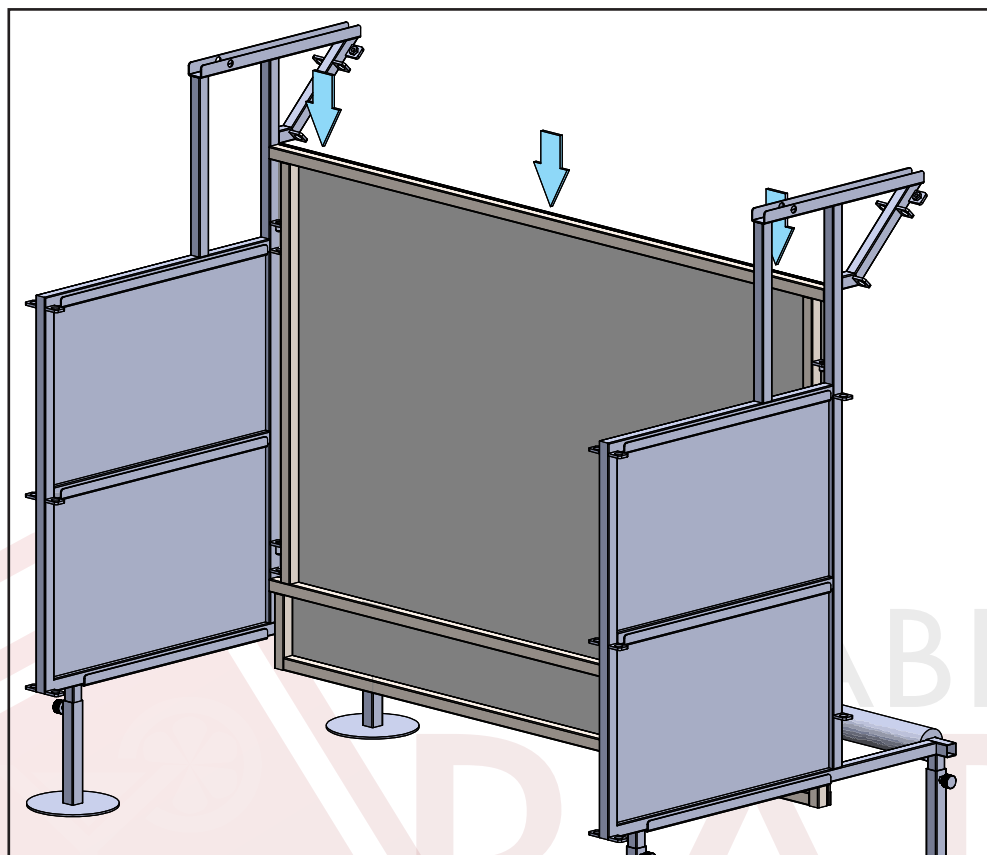


Figure 3

STEP 4: Install the upper ACP panel the same way you installed the lower ACP panel.

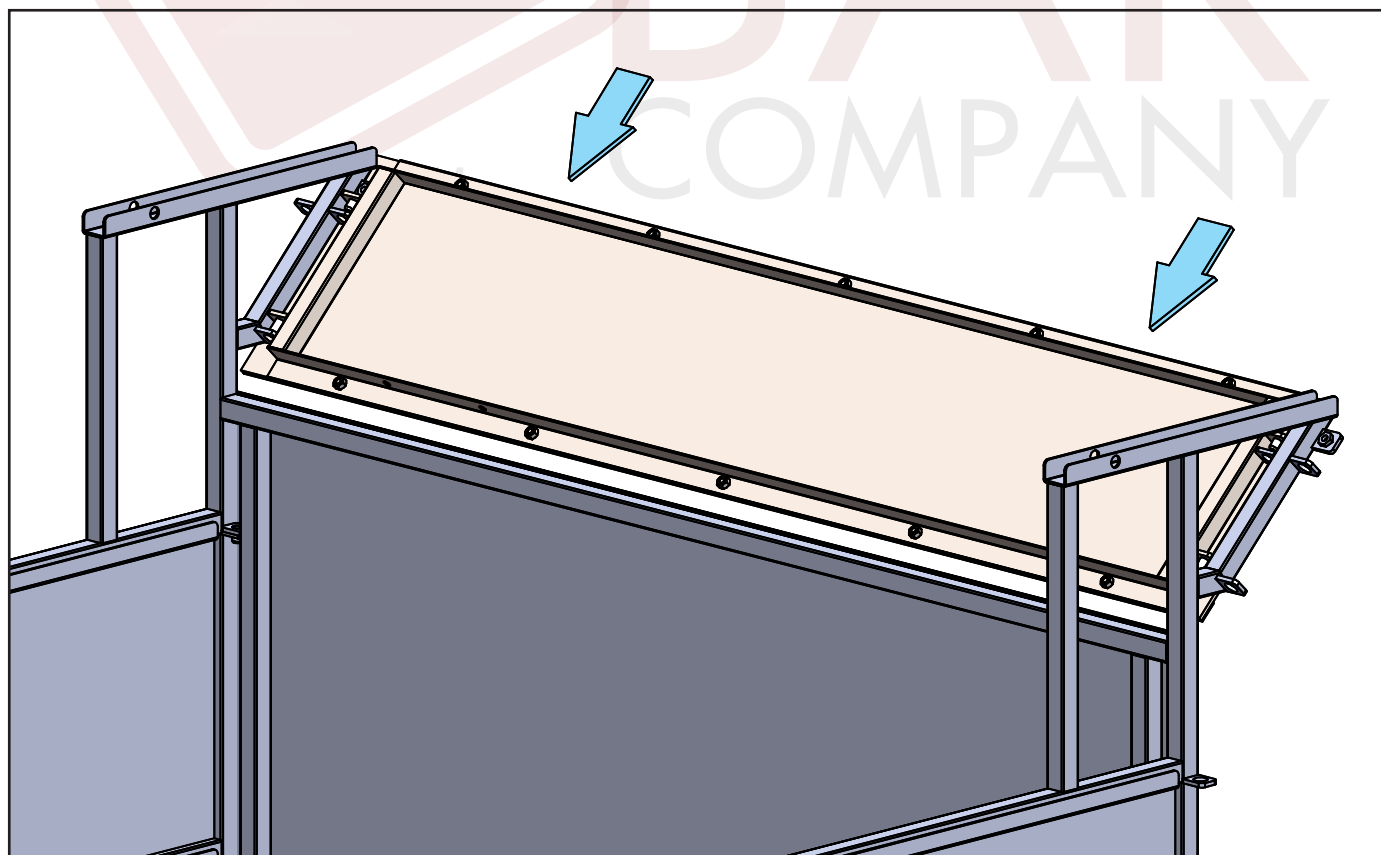


Figure 4

STEP 5: Use provided locking pins to secure bottom ACP panel. Place loop behind pin post after installing locking pins.

Note: Install locking pins on both sides of the ACP panel, as shown below

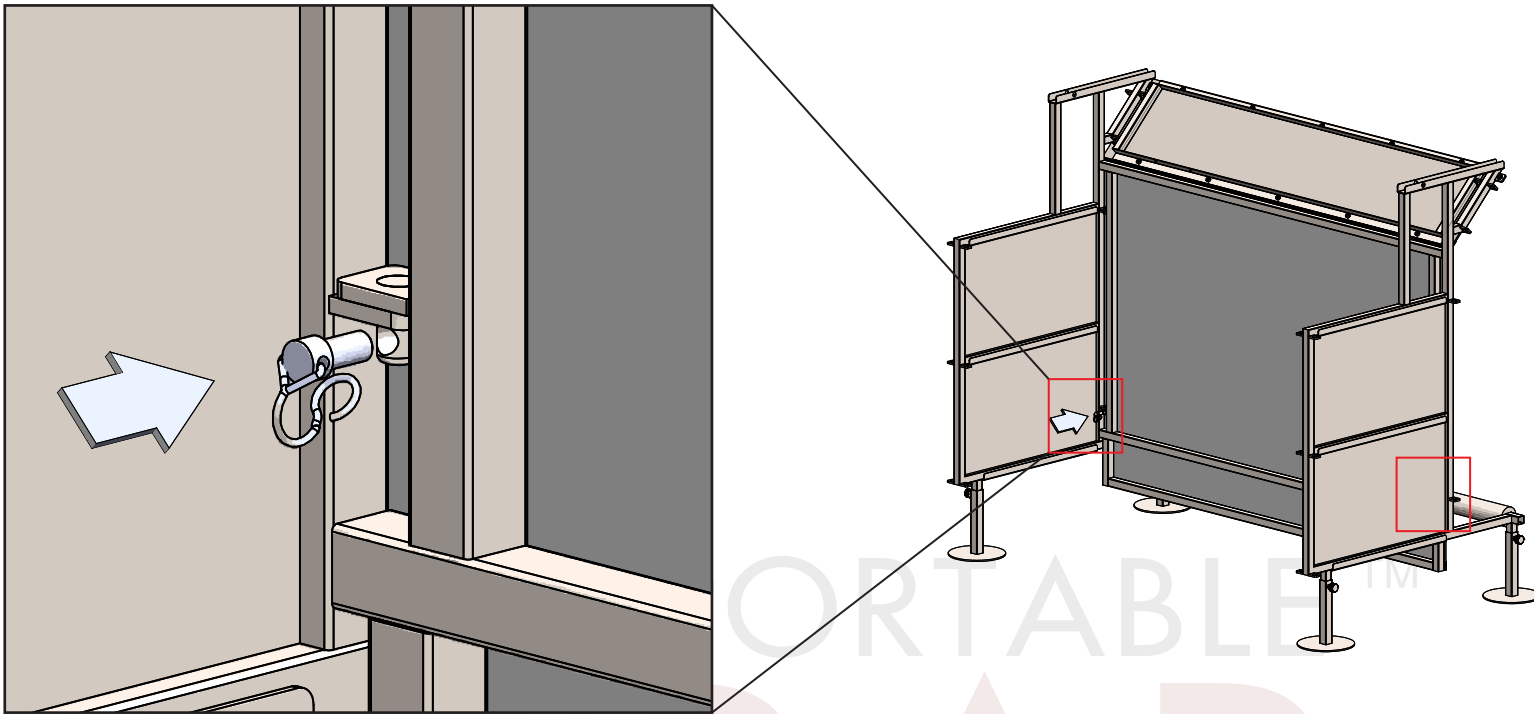


Figure 5

STEP 6: Install bottom shelf by sliding it into the channels of the side frames, as shown below. Lock it in place using provided locking rings. Install rings by inserting them on the side holes of the frame and have it come out the bottom of the frame, as shown. Repeat the latter 3 times on the specified locations shown below.

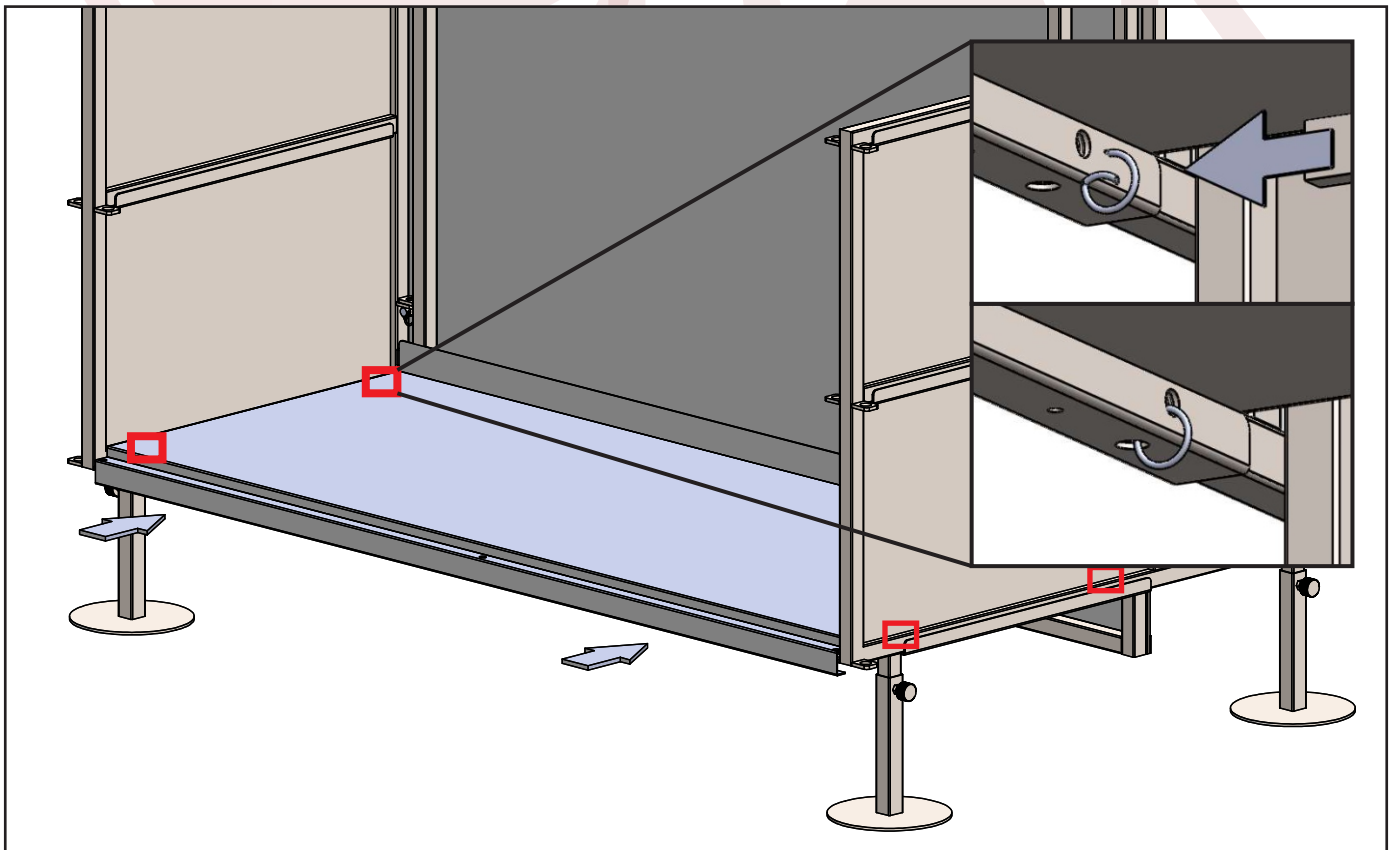


Figure 6

STEP 7: Repeat STEP 6 to install working surface. If you bought an additional shelf you may install it the same way.

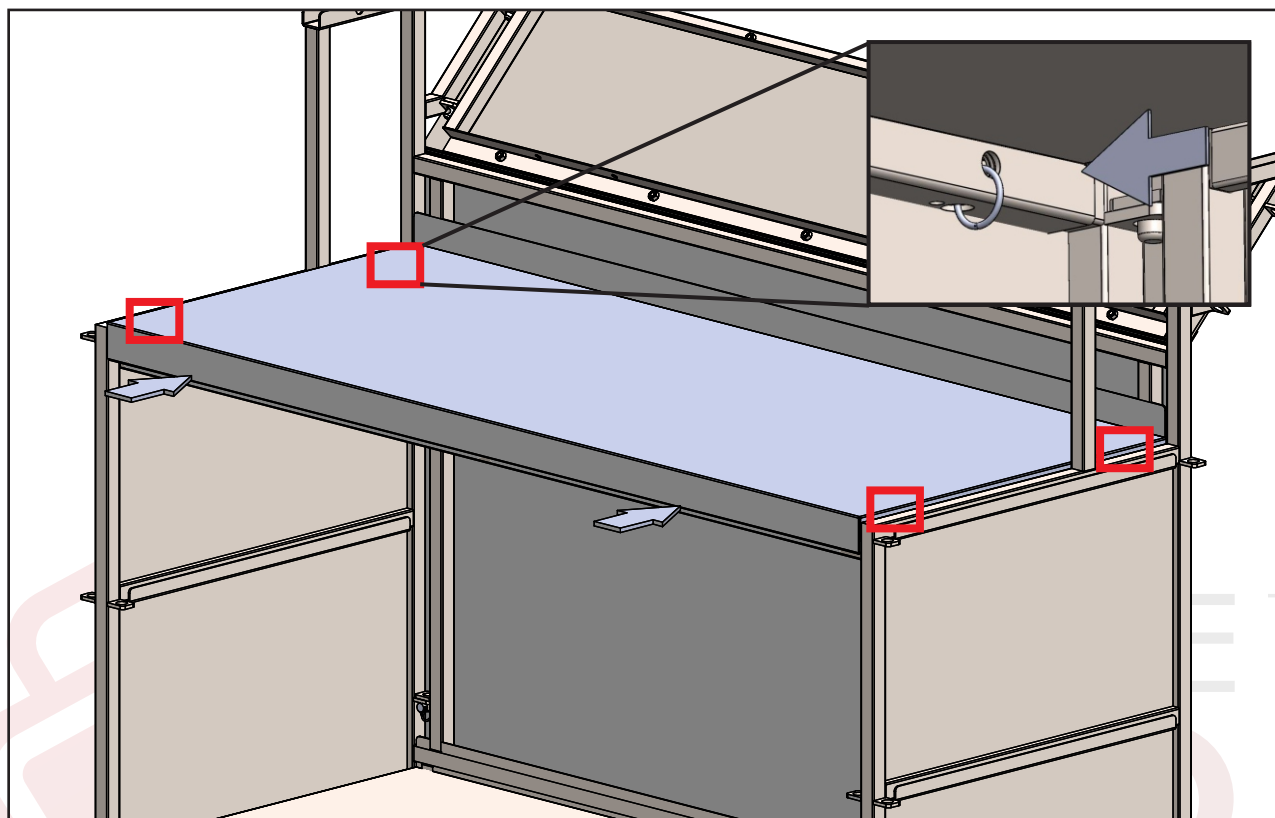


Figure 7

Note: If the add-on middle shelf was purchased install it now.

STEP 8: Place counter on top of side frames upper channels.

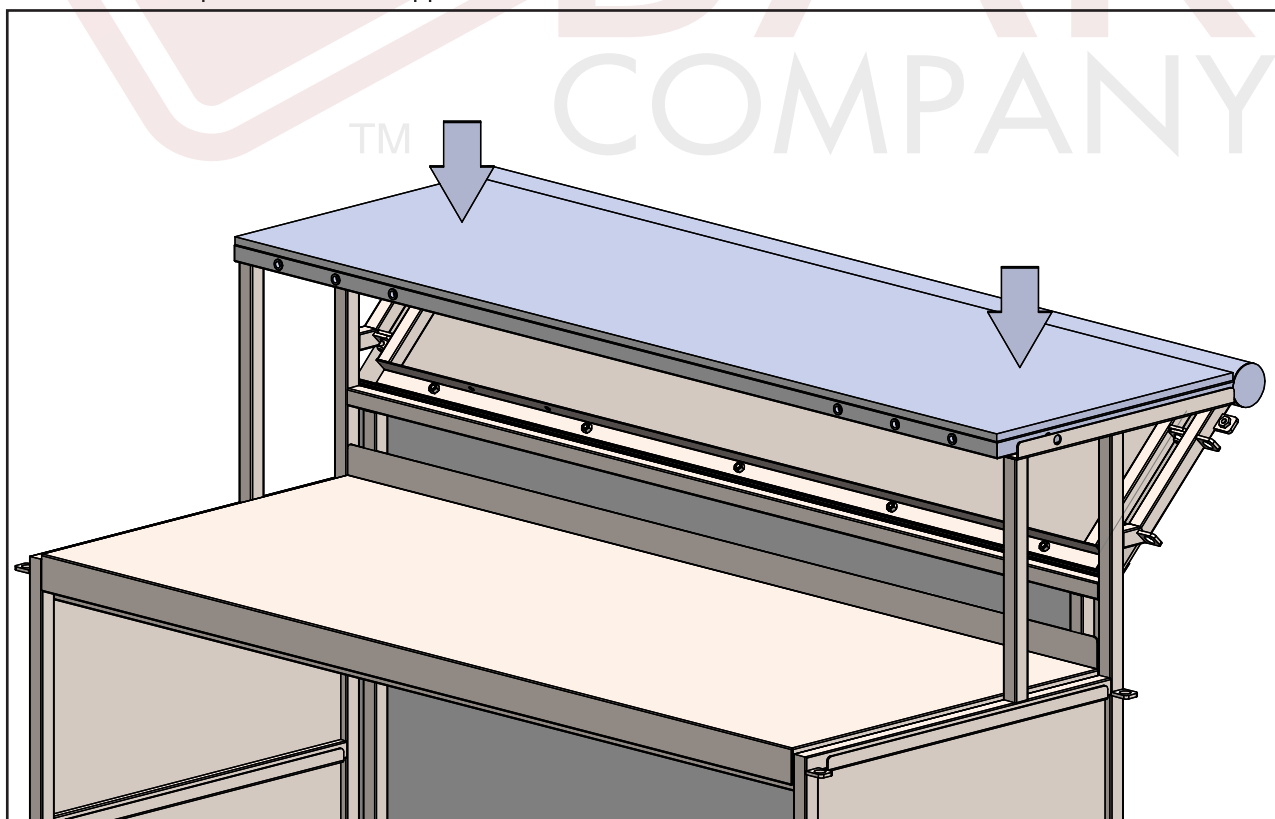


Figure 8

STEP 9: Install left door by aligning bottom post with the bottom's shelf opening. Pull string latch while inserting door at an angle. Release spring latch to lock it in place.

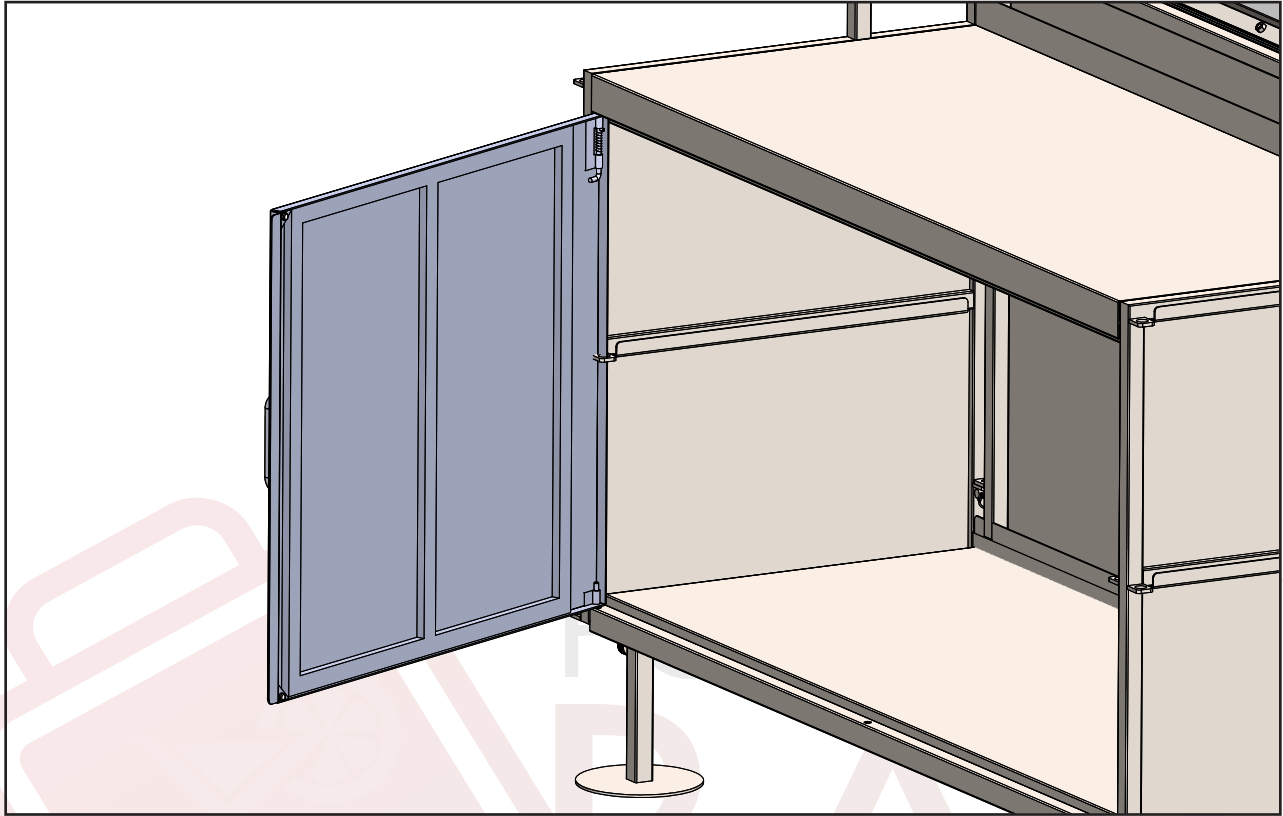


Figure 9

STEP 10: Repeat last step with right door.

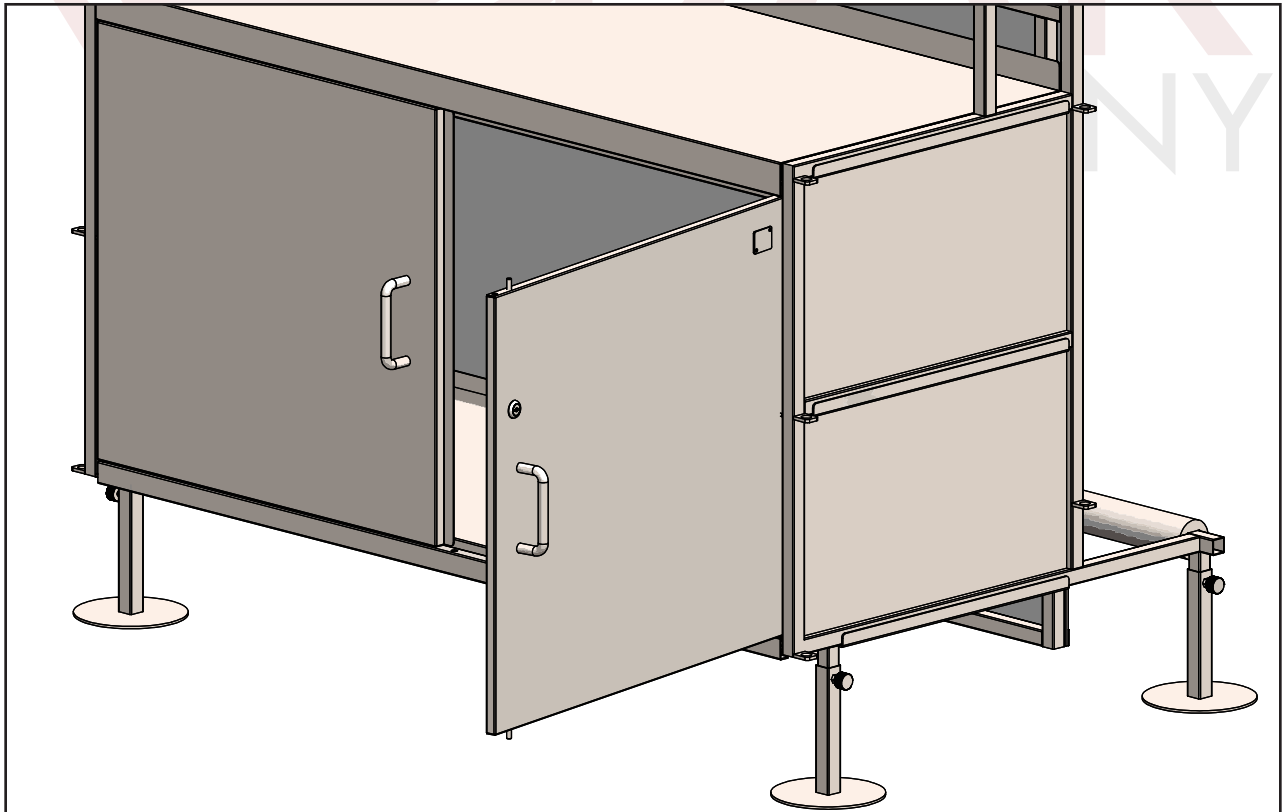


Figure 10



Contact us

Tel # 877-958-7901

Fax # 866-659-3353

E-mail: info@theportablebarcompany.com

Visit us at

www.theportablebarcompany.com

